

Area  
637 SF

UNIT 01L DUP  
2689 SF

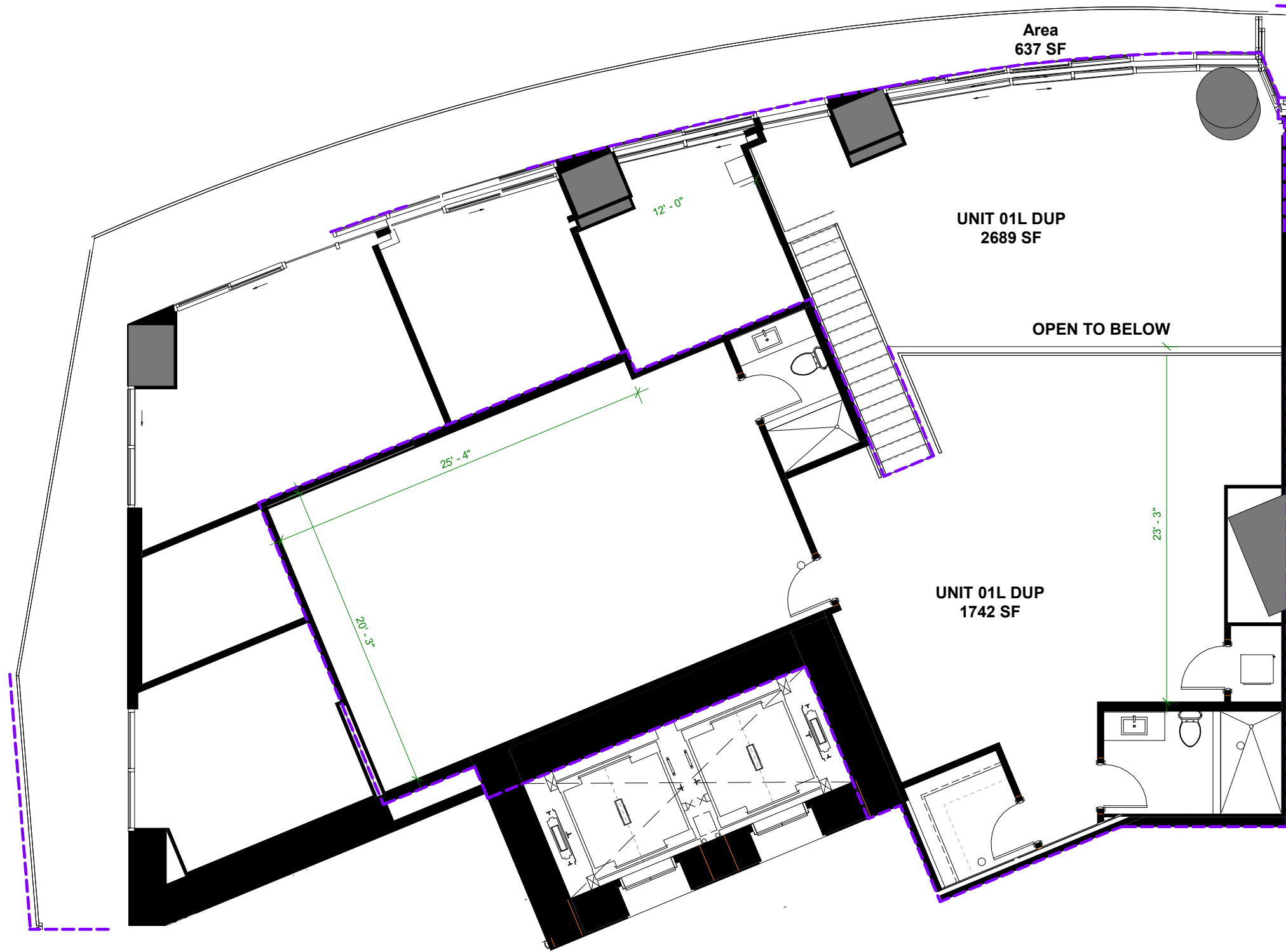
Residence 01 L DUP | Levels 10 & 11  
3 BEDROOMS 6 BATHROOMS, FAMILY/  
GUEST ROOM, MEDIA ROOM + DEN

A/C INTERIOR AREA:	4,431 SQ.FT.	411.65 SQ.M.
TERRACE AREA:	637 SQ.FT.	59.17 SQ.M.
TOTAL RESIDENCE:	5,068 SQ.FT.	470.83 SQ.M.

FIRST FLOOR

ORAL REPRESENTATIONS CANNOT BE RELIED UPON AS CORRECTLY STATING THE REPRESENTATIONS OF THE DEVELOPER. FOR CORRECT REPRESENTATIONS, REFERENCE SHOULD BE MADE TO THE DOCUMENTS REQUIRED BY SECTION 718.503, FLORIDA STATUTES, TO BE FURNISHED BY A DEVELOPER TO A BUYER OR LESSEE.

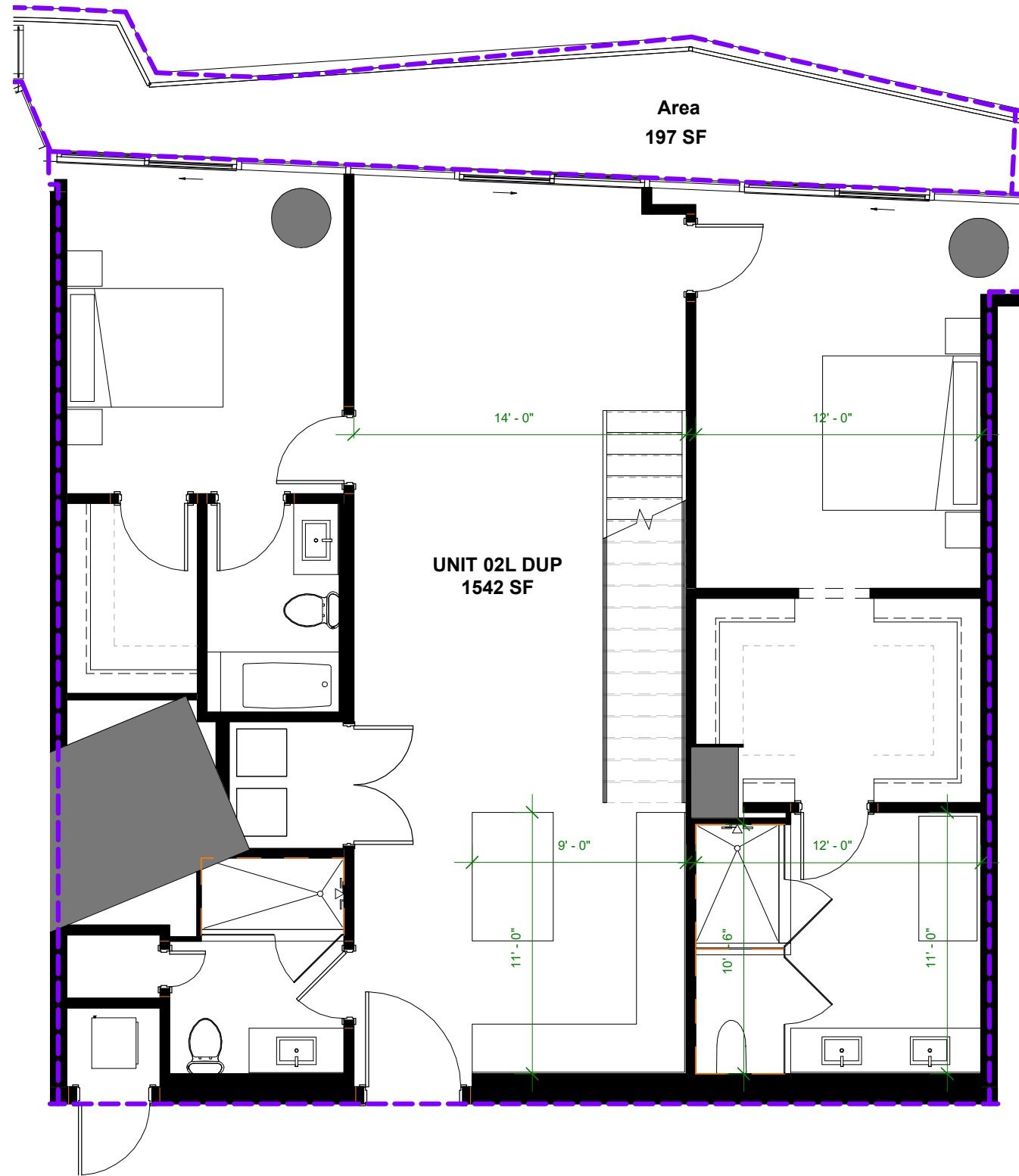
THE DIMENSIONS STATED FOR ANY DEPICTED UNIT FLOOR PLAN ARE APPROXIMATE BECAUSE THERE ARE VARIOUS RECOGNIZED METHODS FOR CALCULATING THE SQUARE FOOTAGE OF A UNIT. THE SQUARE FOOTAGE STATED HEREIN IS CALCULATED FROM THE EXTERIOR BOUNDARIES OF THE EXTERIOR WALLS TO THE CENTERLINE OF INTERIOR DEMISING WALLS WITHOUT DEDUCTIONS FOR CUTOUTS, CURVES, OR ARCHITECTURAL FEATURES. THIS METHOD TYPICALLY RESULTS IN QUOTED DIMENSIONS GREATER THAN THE DIMENSIONS THAT WOULD BE DETERMINED BY USING OTHER ACCEPTED METHODS. THE ILLUSTRATIONS AND IMAGES ARE CONCEPTUAL. THE FLOOR PLAN, UNIT LAYOUT, LOCATIONS OF WINDOWS, DOORS, CLOSETS, PLUMBING FIXTURES, MECHANICAL EQUIPMENT, APPLIANCES, STRUCTURAL ELEMENTS, ARCHITECTURAL DESIGN ELEMENTS, AND THE USES, CONFIGURATIONS, AND ENTRIES TO ROOMS MAY CHANGE BASED ON FINAL APPROVED PLANS, PERMITTING, AND COMPLETED CONSTRUCTION. THE FURNITURE LAYOUT AND THE USES OF SPACE ILLUSTRATED ARE SUGGESTED USES ONLY AND NOT INTENDED TO GUARANTY ANY SPECIFIC USE OF SPACE OR ACCOMMODATION OF SPECIFIC FURNISHINGS. FURNISHINGS, DESIGN FEATURES, FIXTURES, AND DÉCOR ILLUSTRATED ARE CONCEPTUAL AND MAY NOT BE INCLUDED WITH A UNIT PURCHASE. CONSULT THE DEVELOPER'S PROSPECTUS WHICH WILL BE PROVIDED TO YOU BY THE DEVELOPER TO LEARN WHAT IS INCLUDED WITH A UNIT PURCHASE AND TO REVIEW THE UNIT SQUARE FOOTAGE CALCULATION METHOD TO BE RELIED UPON, WHICH IS SET FORTH IN THE DEVELOPER'S PROSPECTUS. THE DEVELOPER, 444 BRICKELL ONE, LLC, IS A LICENSEE OF THE RELATED GROUP AND THE OWNER OF BACCARAT®, NEITHER OF WHICH IS THE DEVELOPER. 2021© WITH ALL RIGHTS RESERVED. THE COMPLETE OFFERING TERMS ARE IN A CPS-12 APPLICATION AVAILABLE FROM THE OFFEROR. FILE NO. CP22-0059



Residence 01 L DUP  
SECOND FLOOR

ORAL REPRESENTATIONS CANNOT BE RELIED UPON AS CORRECTLY STATING THE REPRESENTATIONS OF THE DEVELOPER. FOR CORRECT REPRESENTATIONS, REFERENCE SHOULD BE MADE TO THE DOCUMENTS REQUIRED BY SECTION 718.503, FLORIDA STATUTES, TO BE FURNISHED BY A DEVELOPER TO A BUYER OR LESSEE.

THE DIMENSIONS STATED FOR ANY DEPICTED UNIT FLOOR PLAN ARE APPROXIMATE BECAUSE THERE ARE VARIOUS RECOGNIZED METHODS FOR CALCULATING THE SQUARE FOOTAGE OF A UNIT. THE SQUARE FOOTAGE STATED HEREIN IS CALCULATED FROM THE EXTERIOR BOUNDARIES OF THE EXTERIOR WALLS TO THE CENTERLINE OF INTERIOR DEMISING WALLS WITHOUT DEDUCTIONS FOR CUTOUTS, CURVES, OR ARCHITECTURAL FEATURES. THIS METHOD TYPICALLY RESULTS IN QUOTED DIMENSIONS GREATER THAN THE DIMENSIONS THAT WOULD BE DETERMINED BY USING OTHER ACCEPTED METHODS. THE ILLUSTRATIONS AND IMAGES ARE CONCEPTUAL. THE FLOOR PLAN, UNIT LAYOUT, LOCATIONS OF WINDOWS, DOORS, CLOSETS, PLUMBING FIXTURES, MECHANICAL EQUIPMENT, APPLIANCES, STRUCTURAL ELEMENTS, ARCHITECTURAL DESIGN ELEMENTS, AND THE USES, CONFIGURATIONS, AND ENTRIES TO ROOMS MAY CHANGE BASED ON FINAL APPROVED PLANS, PERMITTING, AND COMPLETED CONSTRUCTION. THE FURNITURE LAYOUT AND THE USES OF SPACE ILLUSTRATED ARE SUGGESTED USES ONLY AND NOT INTENDED TO GUARANTY ANY SPECIFIC USE OF SPACE OR ACCOMMODATION OF SPECIFIC FURNISHINGS. FURNISHINGS, DESIGN FEATURES, FIXTURES, AND DÉCOR ILLUSTRATED ARE CONCEPTUAL AND MAY NOT BE INCLUDED WITH A UNIT PURCHASE. CONSULT THE DEVELOPER'S PROSPECTUS WHICH WILL BE PROVIDED TO YOU BY THE DEVELOPER TO LEARN WHAT IS INCLUDED WITH A UNIT PURCHASE AND TO REVIEW THE UNIT SQUARE FOOTAGE CALCULATION METHOD TO BE RELIED UPON, WHICH IS SET FORTH IN THE DEVELOPER'S PROSPECTUS. THE DEVELOPER, 444 BRICKELL ONE, LLC, IS A LICENSEE OF THE RELATED GROUP AND THE OWNER OF BACCARAT®, NEITHER OF WHICH IS THE DEVELOPER. 2021© WITH ALL RIGHTS RESERVED. THE COMPLETE OFFERING TERMS ARE IN A CPS-12 APPLICATION AVAILABLE FROM THE OFFEROR. FILE NO. CP22-0059



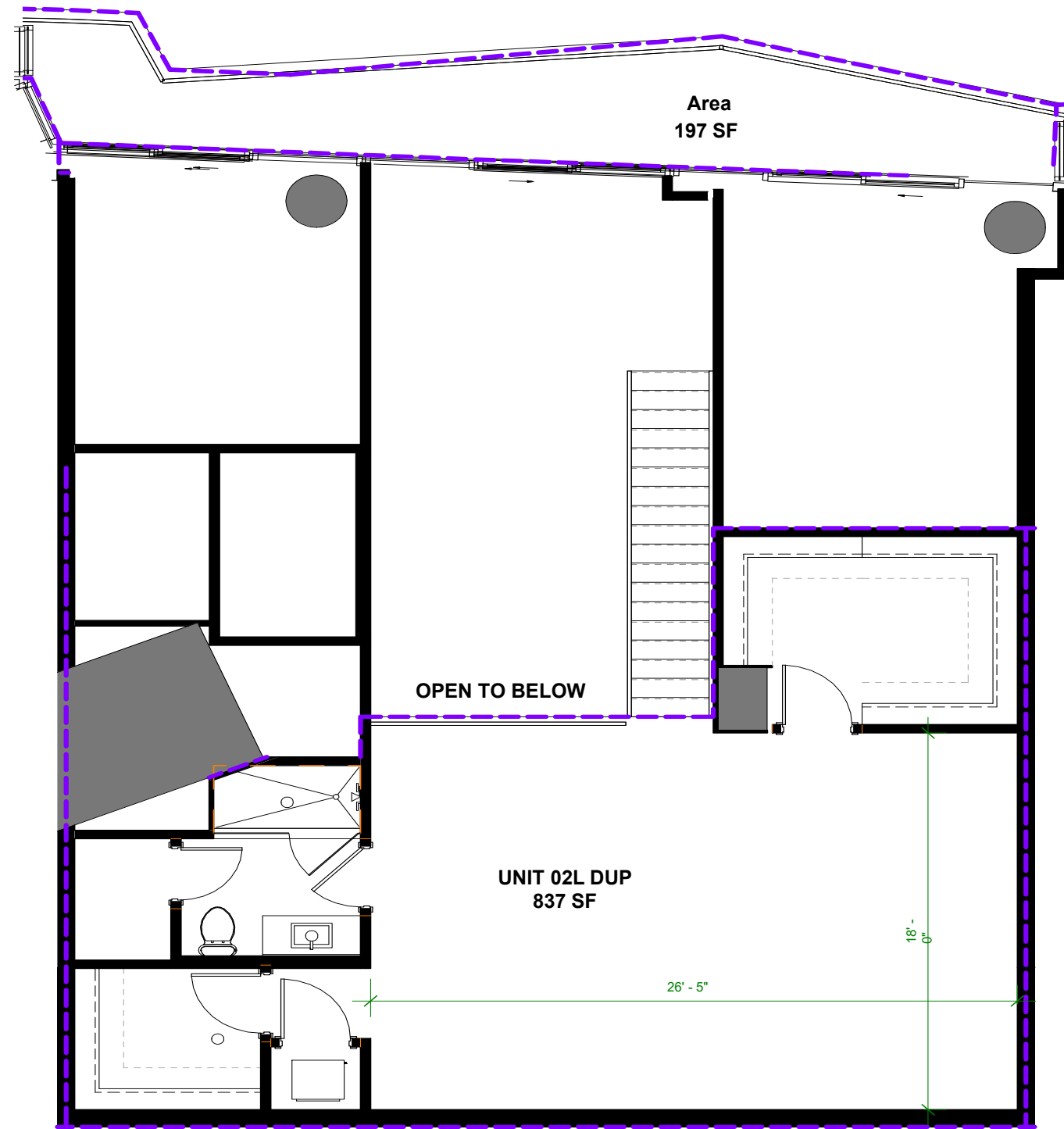
FIRST FLOOR

Residence 02L DUP | Levels 10 & 11  
 2 BEDROOMS 4 BATHROOMS + FAMILY/GUEST ROOM

A/C INTERIOR AREA:	2,379 SQ.FT.	221.01 SQ.M.
TERRACE AREA:	197 SQ.FT.	18.30 SQ.M.
TOTAL RESIDENCE:	2,576 SQ.FT.	239.31 SQ.M.

ORAL REPRESENTATIONS CANNOT BE RELIED UPON AS CORRECTLY STATING THE REPRESENTATIONS OF THE DEVELOPER. FOR CORRECT REPRESENTATIONS, REFERENCE SHOULD BE MADE TO THE DOCUMENTS REQUIRED BY SECTION 718.503, FLORIDA STATUTES, TO BE FURNISHED BY A DEVELOPER TO A BUYER OR LESSEE.

THE DIMENSIONS STATED FOR ANY DEPICTED UNIT FLOOR PLAN ARE APPROXIMATE BECAUSE THERE ARE VARIOUS RECOGNIZED METHODS FOR CALCULATING THE SQUARE FOOTAGE OF A UNIT. THE SQUARE FOOTAGE STATED HEREIN IS CALCULATED FROM THE EXTERIOR BOUNDARIES OF THE EXTERIOR WALLS TO THE CENTERLINE OF INTERIOR DEMISING WALLS WITHOUT DEDUCTIONS FOR CUTOUTS, CURVES, OR ARCHITECTURAL FEATURES. THIS METHOD TYPICALLY RESULTS IN QUOTED DIMENSIONS GREATER THAN THE DIMENSIONS THAT WOULD BE DETERMINED BY USING OTHER ACCEPTED METHODS. THE ILLUSTRATIONS AND IMAGES ARE CONCEPTUAL. THE FLOOR PLAN, UNIT LAYOUT, LOCATIONS OF WINDOWS, DOORS, CLOSETS, PLUMBING FIXTURES, MECHANICAL EQUIPMENT, APPLIANCES, STRUCTURAL ELEMENTS, ARCHITECTURAL DESIGN ELEMENTS, AND THE USES, CONFIGURATIONS, AND ENTRIES TO ROOMS MAY CHANGE BASED ON FINAL APPROVED PLANS, PERMITTING, AND COMPLETED CONSTRUCTION. THE FURNITURE LAYOUT AND THE USES OF SPACE ILLUSTRATED ARE SUGGESTED USES ONLY AND NOT INTENDED TO GUARANTY ANY SPECIFIC USE OF SPACE OR ACCOMMODATION OF SPECIFIC FURNISHINGS. FURNISHINGS, DESIGN FEATURES, FIXTURES, AND DÉCOR ILLUSTRATED ARE CONCEPTUAL AND MAY NOT BE INCLUDED WITH A UNIT PURCHASE. CONSULT THE DEVELOPER'S PROSPECTUS WHICH WILL BE PROVIDED TO YOU BY THE DEVELOPER TO LEARN WHAT IS INCLUDED WITH A UNIT PURCHASE AND TO REVIEW THE UNIT SQUARE FOOTAGE CALCULATION METHOD TO BE RELIED UPON, WHICH IS SET FORTH IN THE DEVELOPER'S PROSPECTUS. THE DEVELOPER, 444 BRICKELL ONE, LLC, IS A LICENSEE OF THE RELATED GROUP AND THE OWNER OF BACCARAT®, NEITHER OF WHICH IS THE DEVELOPER. 2021© WITH ALL RIGHTS RESERVED. THE COMPLETE OFFERING TERMS ARE IN A CPS-12 APPLICATION AVAILABLE FROM THE OFFEROR. FILE NO. CP22-0059

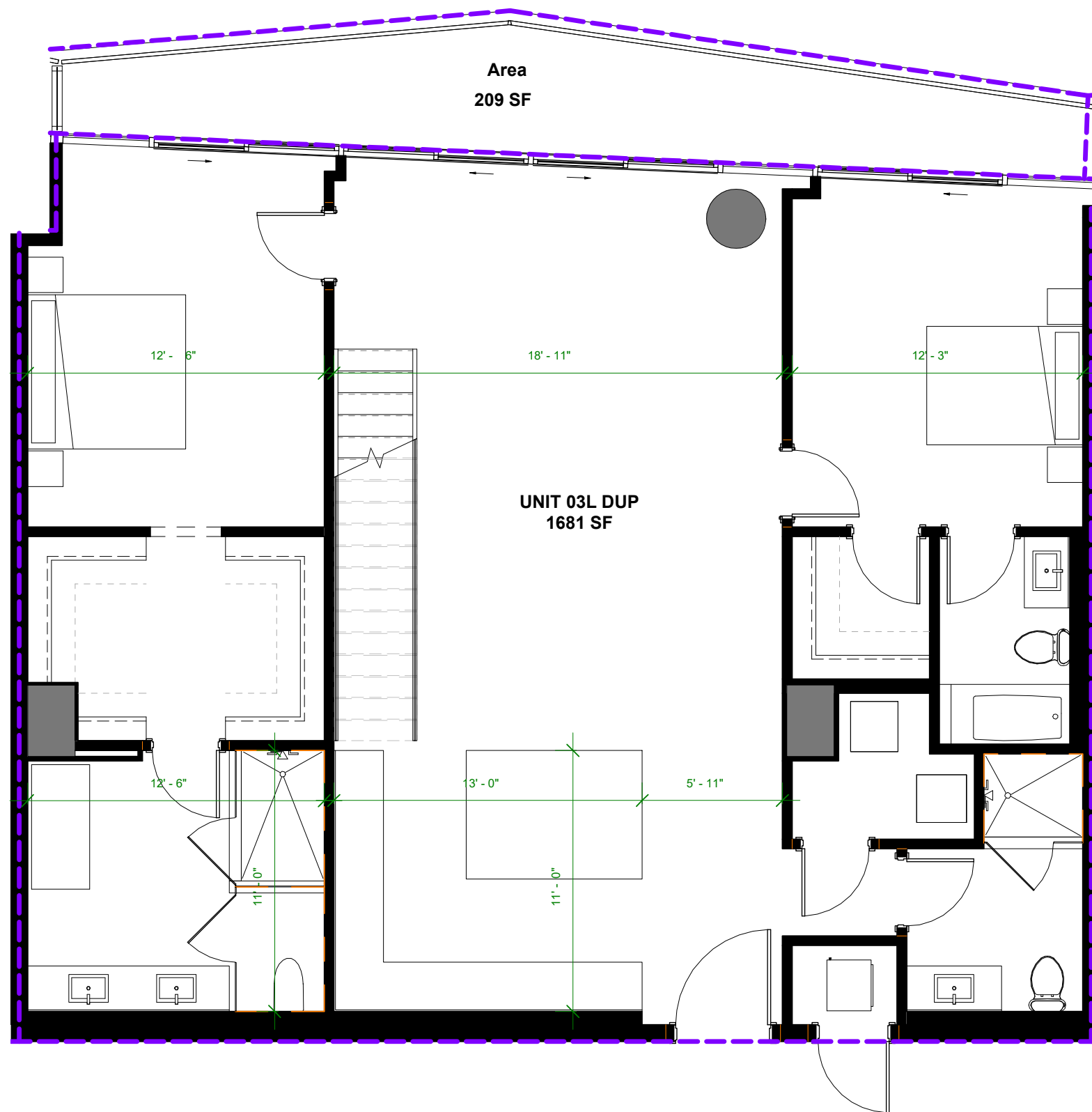


Residence 02L DUP  
SECOND FLOOR

ORAL REPRESENTATIONS CANNOT BE RELIED UPON AS CORRECTLY STATING THE REPRESENTATIONS OF THE DEVELOPER. FOR CORRECT REPRESENTATIONS, REFERENCE SHOULD BE MADE TO THE DOCUMENTS REQUIRED BY SECTION 718.503, FLORIDA STATUTES, TO BE FURNISHED BY A DEVELOPER TO A BUYER OR LESSEE.

THE DIMENSIONS STATED FOR ANY DEPICTED UNIT FLOOR PLAN ARE APPROXIMATE BECAUSE THERE ARE VARIOUS RECOGNIZED METHODS FOR CALCULATING THE SQUARE FOOTAGE OF A UNIT. THE SQUARE FOOTAGE STATED HEREIN IS CALCULATED FROM THE EXTERIOR BOUNDARIES OF THE EXTERIOR WALLS TO THE CENTERLINE OF INTERIOR DEMISING WALLS WITHOUT DEDUCTIONS FOR CUTOUTS, CURVES, OR ARCHITECTURAL FEATURES. THIS METHOD TYPICALLY RESULTS IN QUOTED DIMENSIONS GREATER THAN THE DIMENSIONS THAT WOULD BE DETERMINED BY USING OTHER ACCEPTED METHODS. THE ILLUSTRATIONS AND IMAGES ARE CONCEPTUAL. THE FLOOR PLAN, UNIT LAYOUT, LOCATIONS OF WINDOWS, DOORS, CLOSETS, PLUMBING FIXTURES, MECHANICAL EQUIPMENT, APPLIANCES, STRUCTURAL ELEMENTS, ARCHITECTURAL DESIGN ELEMENTS, AND THE USES, CONFIGURATIONS, AND ENTRIES TO ROOMS MAY CHANGE BASED ON FINAL APPROVED PLANS, PERMITTING, AND COMPLETED CONSTRUCTION. THE FURNITURE LAYOUT AND THE USES OF SPACE ILLUSTRATED ARE SUGGESTED USES ONLY AND NOT INTENDED TO GUARANTY ANY SPECIFIC USE OF SPACE OR ACCOMMODATION OF SPECIFIC FURNISHINGS. FURNISHINGS, DESIGN FEATURES, FIXTURES, AND DÉCOR ILLUSTRATED ARE CONCEPTUAL AND MAY NOT BE INCLUDED WITH A UNIT PURCHASE. CONSULT THE DEVELOPER'S PROSPECTUS WHICH WILL BE PROVIDED TO YOU BY THE DEVELOPER TO LEARN WHAT IS INCLUDED WITH A UNIT PURCHASE AND TO REVIEW THE UNIT SQUARE FOOTAGE CALCULATION METHOD TO BE RELIED UPON, WHICH IS SET FORTH IN THE DEVELOPER'S PROSPECTUS. THE DEVELOPER, 444 BRICKELL ONE, LLC, IS A LICENSEE OF THE RELATED GROUP AND THE OWNER OF BACCARAT®, NEITHER OF WHICH IS THE DEVELOPER. 2021© WITH ALL RIGHTS RESERVED.

THE COMPLETE OFFERING TERMS ARE IN A CPS-12 APPLICATION AVAILABLE FROM THE OFFEROR. FILE NO. CP22-0059

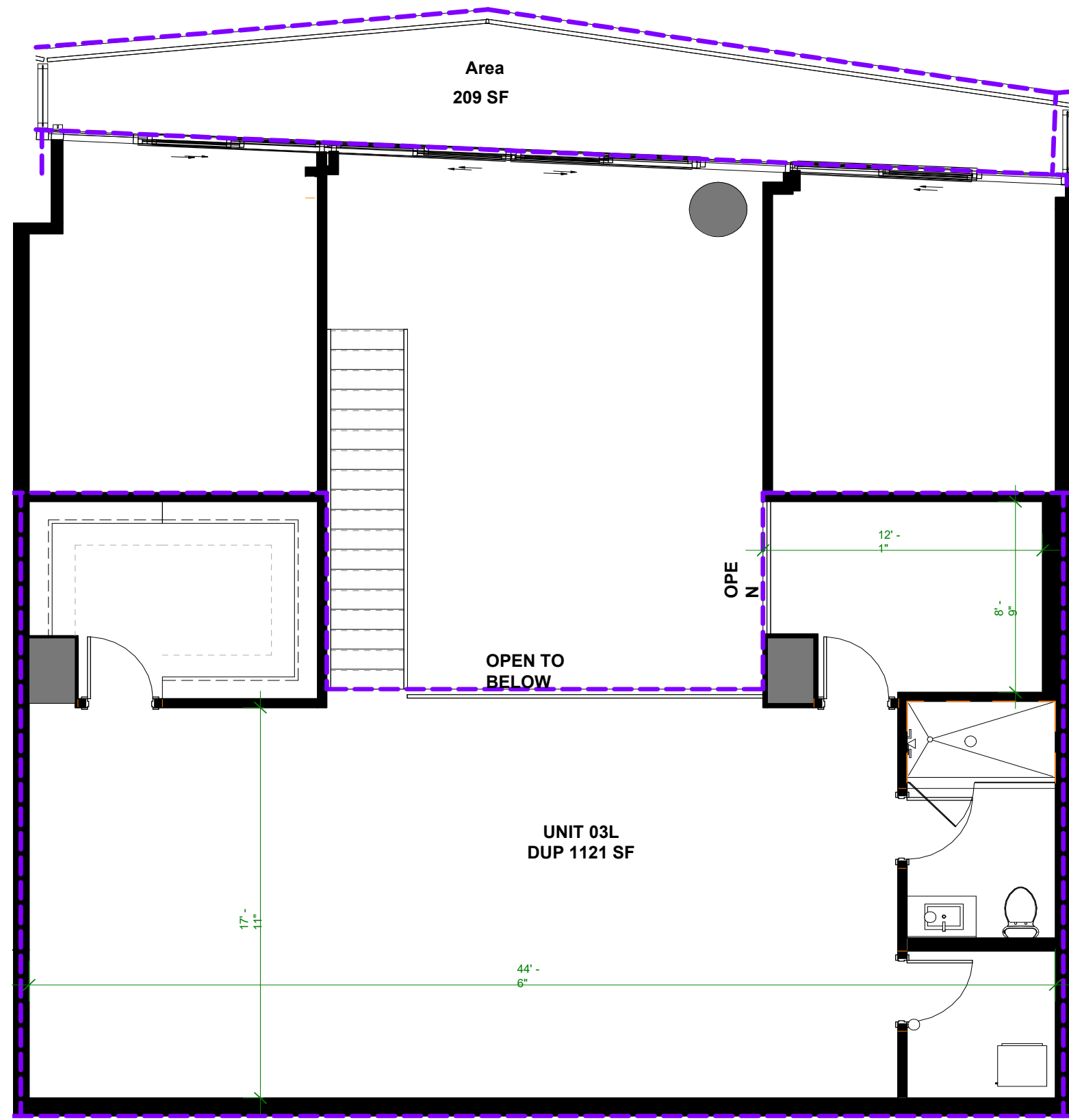


**Residence 03 L DUP | Levels 10 & 11**  
**2 BEDROOMS 3.5 BATHROOMS,**  
**FAMILY/GUEST ROOM + OFFICE**

A/C INTERIOR AREA:	2,802 SQ.FT.	260.31 SQ.M.
TERRACE AREA:	209 SQ.FT.	19.41 SQ.M.
TOTAL RESIDENCE:	3,011 SQ.FT.	279.73 SQ.M.

ORAL REPRESENTATIONS CANNOT BE RELIED UPON AS CORRECTLY STATING THE REPRESENTATIONS OF THE DEVELOPER. FOR CORRECT REPRESENTATIONS, REFERENCE SHOULD BE MADE TO THE DOCUMENTS REQUIRED BY SECTION 718.503, FLORIDA STATUTES, TO BE FURNISHED BY A DEVELOPER TO A BUYER OR LESSEE.

THE DIMENSIONS STATED FOR ANY DEPICTED UNIT FLOOR PLAN ARE APPROXIMATE BECAUSE THERE ARE VARIOUS RECOGNIZED METHODS FOR CALCULATING THE SQUARE FOOTAGE OF A UNIT. THE SQUARE FOOTAGE STATED HEREIN IS CALCULATED FROM THE EXTERIOR BOUNDARIES OF THE EXTERIOR WALLS TO THE CENTERLINE OF INTERIOR DEMISING WALLS WITHOUT DEDUCTIONS FOR CUTOUTS, CURVES, OR ARCHITECTURAL FEATURES. THIS METHOD TYPICALLY RESULTS IN QUOTED DIMENSIONS GREATER THAN THE DIMENSIONS THAT WOULD BE DETERMINED BY USING OTHER ACCEPTED METHODS. THE ILLUSTRATIONS AND IMAGES ARE CONCEPTUAL. THE FLOOR PLAN, UNIT LAYOUT, LOCATIONS OF WINDOWS, DOORS, CLOSETS, PLUMBING FIXTURES, MECHANICAL EQUIPMENT, APPLIANCES, STRUCTURAL ELEMENTS, ARCHITECTURAL DESIGN ELEMENTS, AND THE USES, CONFIGURATIONS, AND ENTRIES TO ROOMS MAY CHANGE BASED ON FINAL APPROVED PLANS, PERMITTING, AND COMPLETED CONSTRUCTION. THE FURNITURE LAYOUT AND THE USES OF SPACE ILLUSTRATED ARE SUGGESTED USES ONLY AND NOT INTENDED TO GUARANTY ANY SPECIFIC USE OF SPACE OR ACCOMMODATION OF SPECIFIC FURNISHINGS. FURNISHINGS, DESIGN FEATURES, FIXTURES, AND DÉCOR ILLUSTRATED ARE CONCEPTUAL AND MAY NOT BE INCLUDED WITH A UNIT PURCHASE. CONSULT THE DEVELOPER'S PROSPECTUS WHICH WILL BE PROVIDED TO YOU BY THE DEVELOPER TO LEARN WHAT IS INCLUDED WITH A UNIT PURCHASE AND TO REVIEW THE UNIT SQUARE FOOTAGE CALCULATION METHOD TO BE RELIED UPON, WHICH IS SET FORTH IN THE DEVELOPER'S PROSPECTUS. THE DEVELOPER, 444 BRICKELL ONE, LLC, IS A LICENSEE OF THE RELATED GROUP AND THE OWNER OF BACCARAT®, NEITHER OF WHICH IS THE DEVELOPER. 2021© WITH ALL RIGHTS RESERVED. THE COMPLETE OFFERING TERMS ARE IN A CPS-12 APPLICATION AVAILABLE FROM THE OFFEROR. FILE NO. CP22-0059

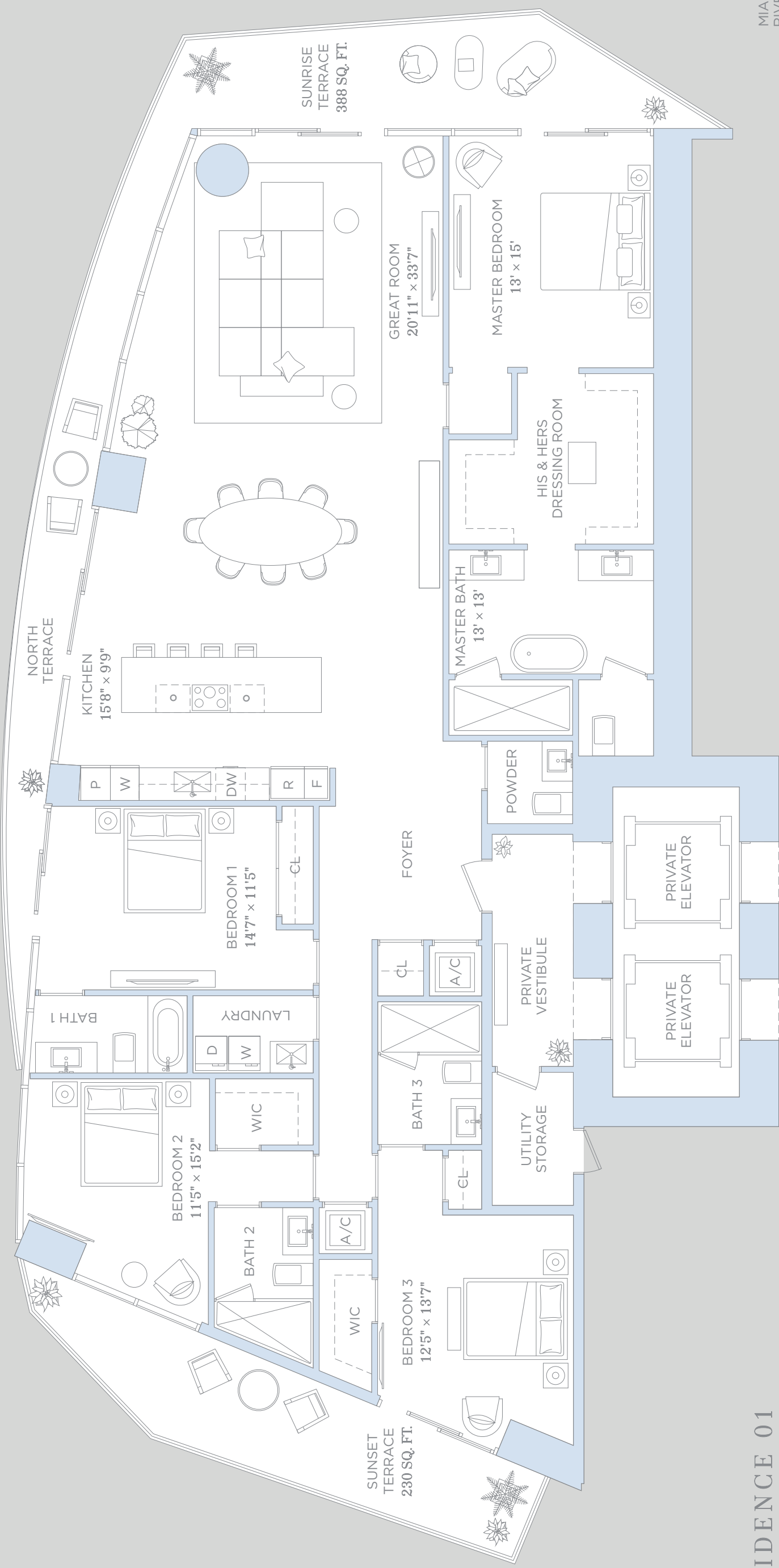


Residence 03 L DUP  
SECOND FLOOR

ORAL REPRESENTATIONS CANNOT BE RELIED UPON AS CORRECTLY STATING THE REPRESENTATIONS OF THE DEVELOPER. FOR CORRECT REPRESENTATIONS, REFERENCE SHOULD BE MADE TO THE DOCUMENTS REQUIRED BY SECTION 718.503, FLORIDA STATUTES, TO BE FURNISHED BY A DEVELOPER TO A BUYER OR LESSEE.

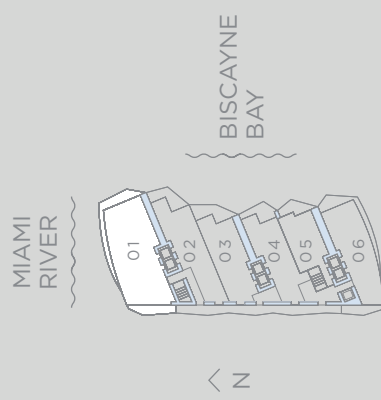
THE DIMENSIONS STATED FOR ANY DEPICTED UNIT FLOOR PLAN ARE APPROXIMATE BECAUSE THERE ARE VARIOUS RECOGNIZED METHODS FOR CALCULATING THE SQUARE FOOTAGE OF A UNIT. THE SQUARE FOOTAGE STATED HEREIN IS CALCULATED FROM THE EXTERIOR BOUNDARIES OF THE EXTERIOR WALLS TO THE CENTERLINE OF INTERIOR DEMISING WALLS WITHOUT DEDUCTIONS FOR CUTOUTS, CURVES, OR ARCHITECTURAL FEATURES. THIS METHOD TYPICALLY RESULTS IN QUOTED DIMENSIONS GREATER THAN THE DIMENSIONS THAT WOULD BE DETERMINED BY USING OTHER ACCEPTED METHODS. THE ILLUSTRATIONS AND IMAGES ARE CONCEPTUAL. THE FLOOR PLAN, UNIT LAYOUT, LOCATIONS OF WINDOWS, DOORS, CLOSETS, PLUMBING FIXTURES, MECHANICAL EQUIPMENT, APPLIANCES, STRUCTURAL ELEMENTS, ARCHITECTURAL DESIGN ELEMENTS, AND THE USES, CONFIGURATIONS, AND ENTRIES TO ROOMS MAY CHANGE BASED ON FINAL APPROVED PLANS, PERMITTING, AND COMPLETED CONSTRUCTION. THE FURNITURE LAYOUT AND THE USES OF SPACE ILLUSTRATED ARE SUGGESTED USES ONLY AND NOT INTENDED TO GUARANTY ANY SPECIFIC USE OF SPACE OR ACCOMMODATION OF SPECIFIC FURNISHINGS. FURNISHINGS, DESIGN FEATURES, FIXTURES, AND DÉCOR ILLUSTRATED ARE CONCEPTUAL AND MAY NOT BE INCLUDED WITH A UNIT PURCHASE. CONSULT THE DEVELOPER'S PROSPECTUS WHICH WILL BE PROVIDED TO YOU BY THE DEVELOPER TO LEARN WHAT IS INCLUDED WITH A UNIT PURCHASE AND TO REVIEW THE UNIT SQUARE FOOTAGE CALCULATION METHOD TO BE RELIED UPON, WHICH IS SET FORTH IN THE DEVELOPER'S PROSPECTUS. THE DEVELOPER, 444 BRICKELL ONE, LLC, IS A LICENSEE OF THE RELATED GROUP AND THE OWNER OF BACCARAT®, NEITHER OF WHICH IS THE DEVELOPER. 2021© WITH ALL RIGHTS RESERVED.

THE COMPLETE OFFERING TERMS ARE IN A CPS-12 APPLICATION AVAILABLE FROM THE OFFEROR. FILE NO. CP22-0059

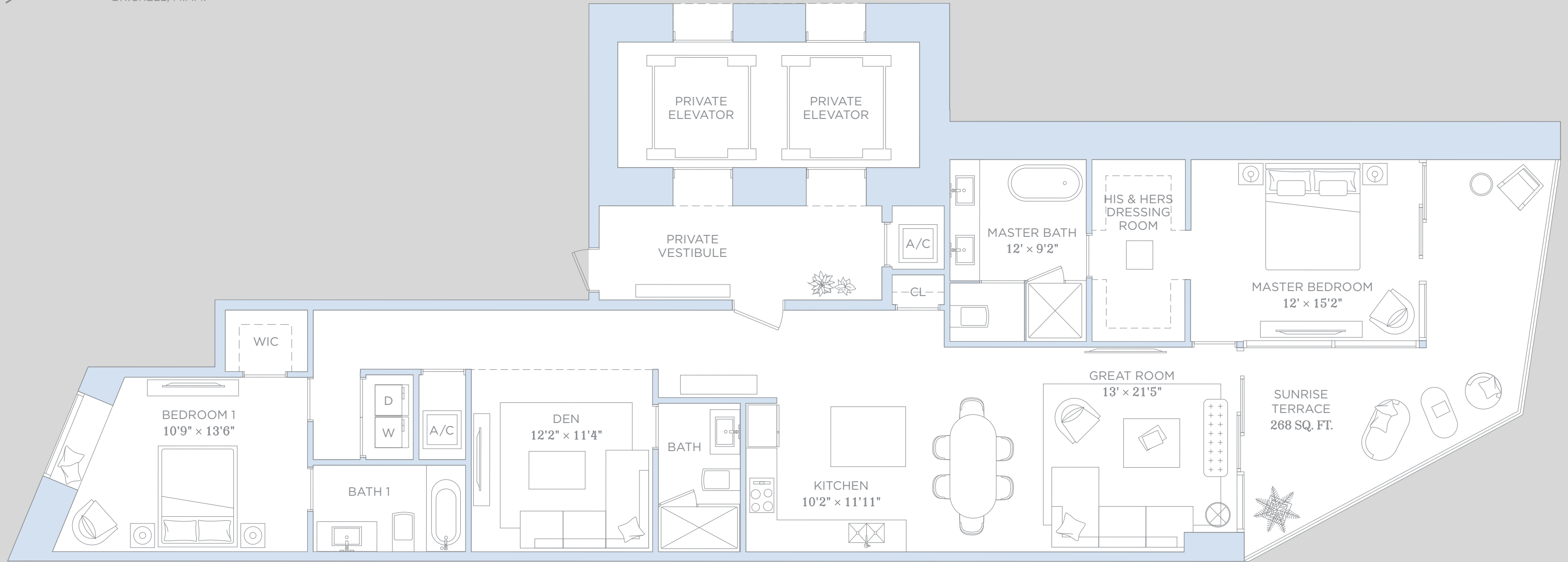


RESIDENCE 01

4 BEDROOMS	4.5 BATHROOMS		
A/C INTERIOR AREA:	3,070 SQ.FT.	285.21 SQ.M.	
TERRACE AREA:	618 SQ.FT.	57.41 SQ.M.	
TOTAL RESIDENCE:	3,688 SQ.FT.	342.62 SQ.M.	







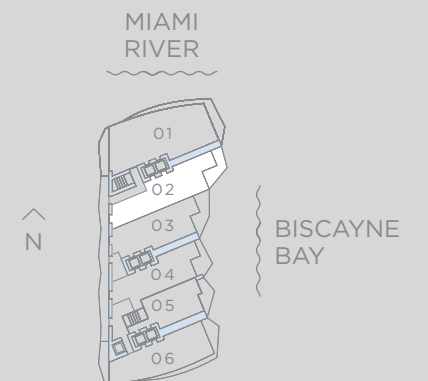
RESIDENCE 02

2 BEDROOMS 3 BATHROOMS & DEN

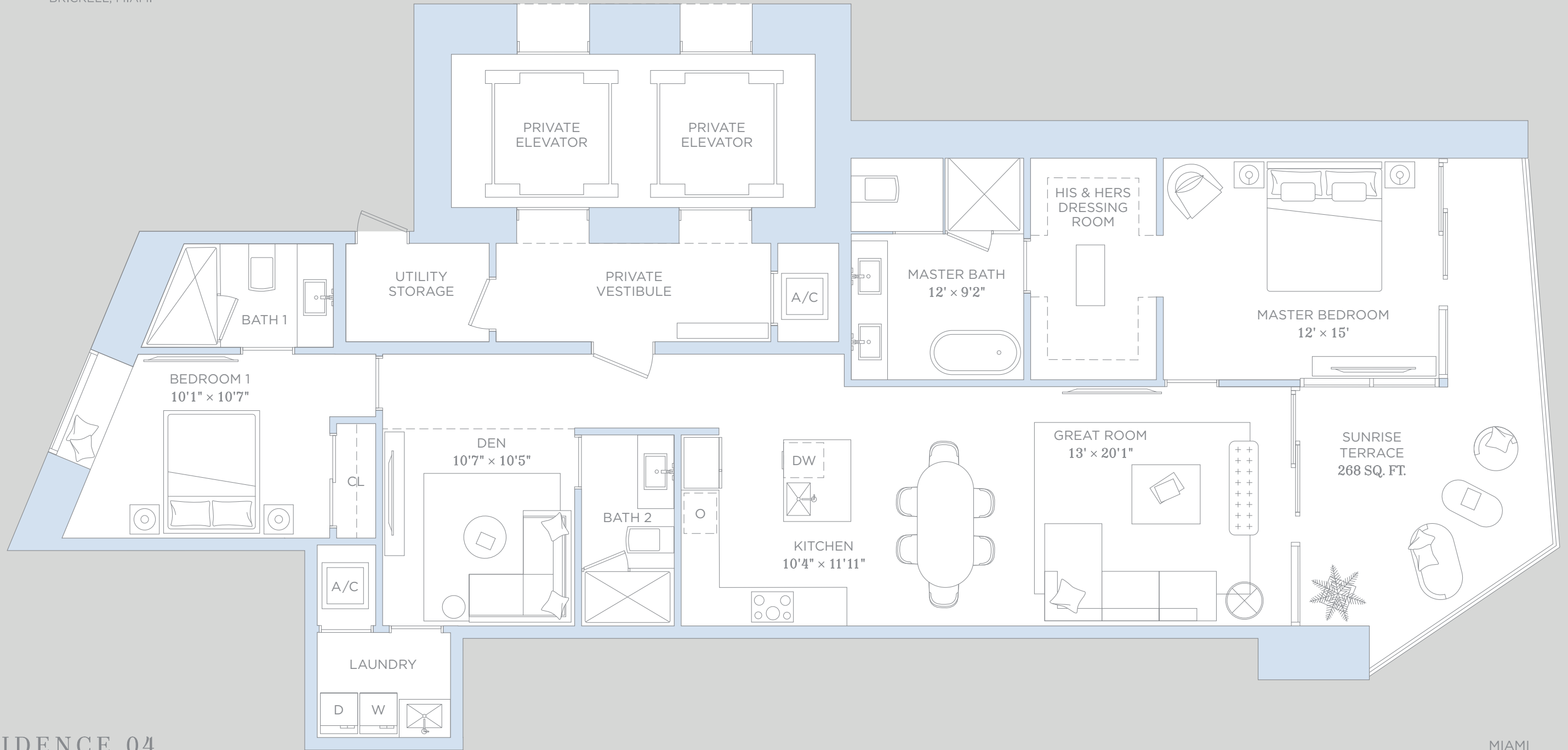
A/C INTERIOR AREA: 1,935 SQ.FT. 179.76 SQ.M.

TERRACE AREA: 268 SQ.FT. 24.89 SQ.M.

TOTAL RESIDENCE: 2,203 SQ.FT. 204.66 SQ.M.



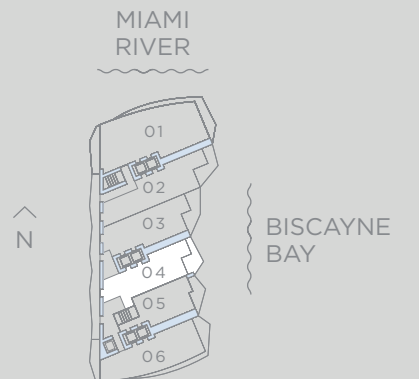


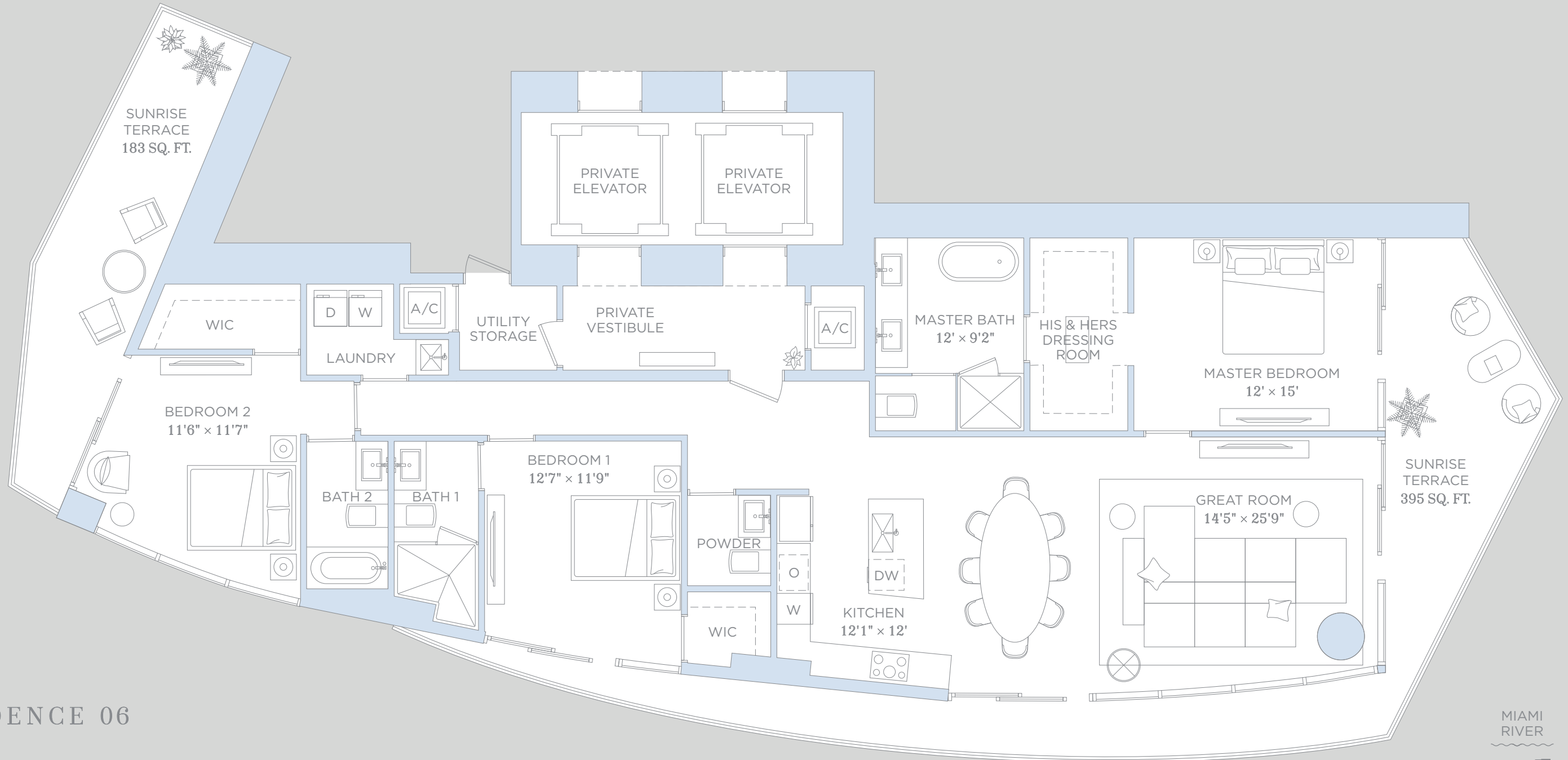


RESIDENCE 04

2 BEDROOMS 3 BATHROOMS & DEN

A/C INTERIOR AREA:	1817 SQ.FT.	168.80 SQ.M.
TERRACE AREA:	268 SQ.FT.	24.89 SQ.M.
TOTAL RESIDENCE:	2,085 SQ.FT.	193.70 SQ.M.

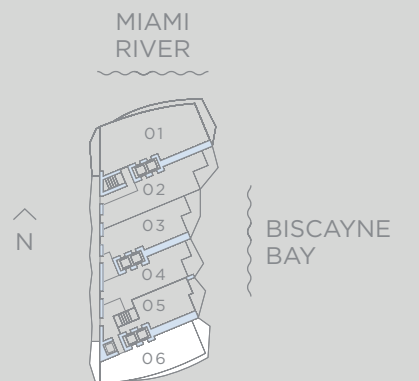




RESIDENCE 06

3 BEDROOMS 3.5 BATHROOMS

A/C INTERIOR AREA:	2,098 SQ.FT.	194.91 SQ.M.
TERRACE AREA:	578 SQ.FT.	53.69 SQ.M.
TOTAL RESIDENCE:	2,676 SQ.FT.	248.60 SQ.M.



# Baccarat

RESIDENCES  
BRICKELL, MIAMI

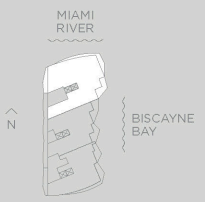


## PENTHOUSE 01

70TH TO 71ST LEVELS

4 BEDROOMS / 5.5 BATHROOMS  
FAMILY ROOM / LIBRARY / DEN / MAID'S ROOM

A/C INTERIOR AREA:	5,042 SQ. FT.	468.42 SQ. M.
TERRACE AREA:	896 SQ. FT.	83.24 SQ. M.
TOTAL RESIDENCE:	5,938 SQ. FT.	551.65 SQ. M.



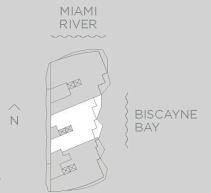
*Baccarat*  
RESIDENCES  
BRICKELL, MIAMI



**PENTHOUSE 02**  
70TH TO 71ST LEVELS

3 BEDROOMS / 4.5 BATHROOMS  
FAMILY ROOM / LIBRARY / DEN / MAID'S ROOM

A/C INTERIOR AREA:	3,665 SQ. FT.	340.49 SQ. M.
TERRACE AREA:	566 SQ. FT.	52.58 SQ. M.
TOTAL RESIDENCE:	4,231 SQ. FT.	393.07 SQ. M.



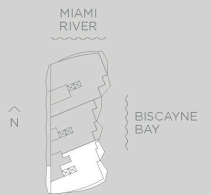
*Baccarat*  
RESIDENCES  
BRICKELL, MIAMI



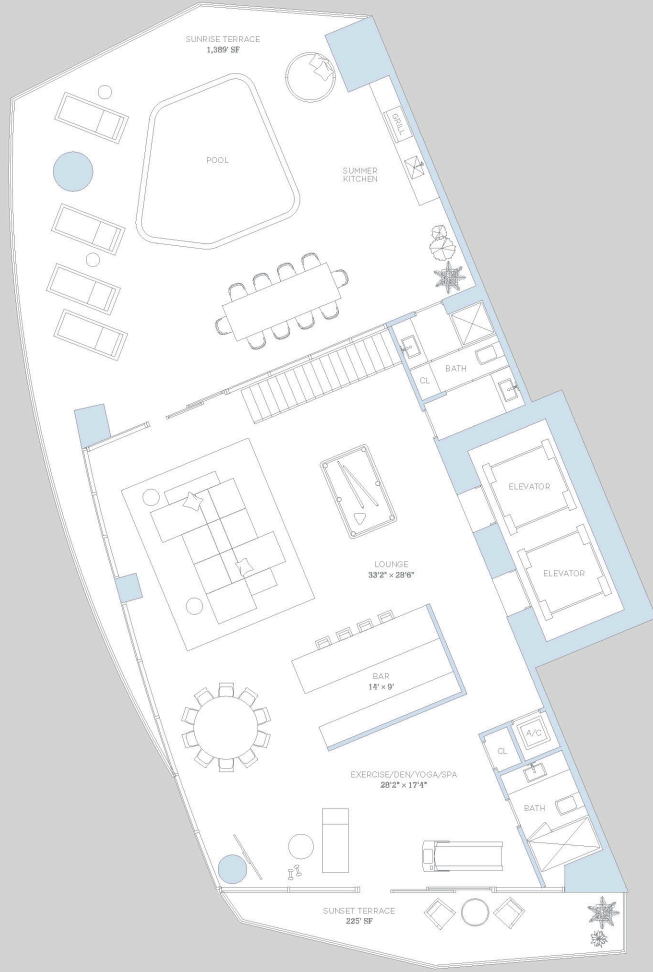
**PENTHOUSE 03**  
70TH TO 71ST LEVELS

3 BEDROOMS / 4.5 BATHROOMS  
DEN / MAID'S ROOM

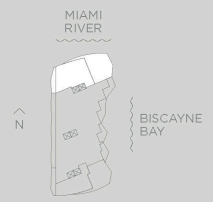
A/C INTERIOR AREA:	3,522 SQ. FT.	327.20 SQ. M.
TERRACE AREA:	758 SQ. FT.	70.42 SQ. M.
TOTAL RESIDENCE:	4,280 SQ. FT.	397.62 SQ. M.



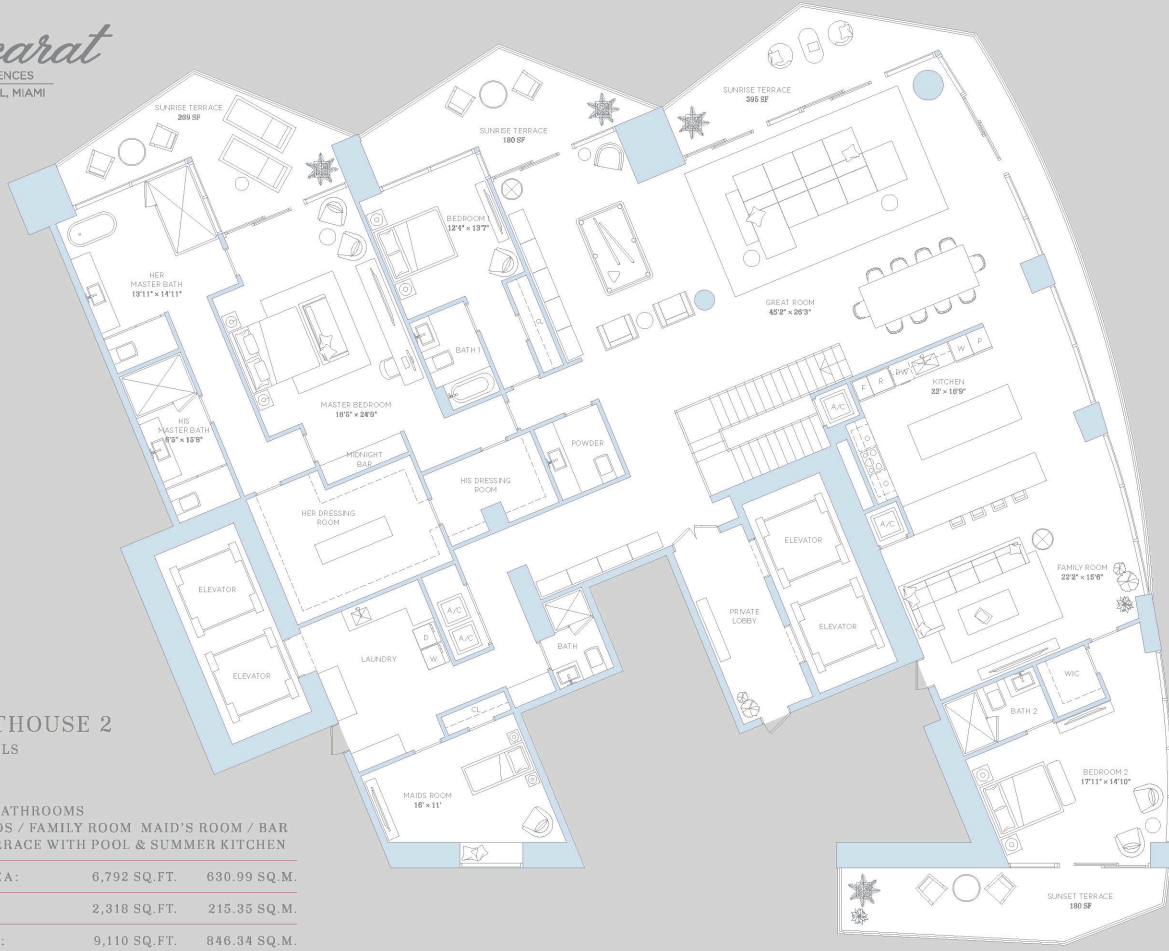
*Baccarat*  
RESIDENCES  
BRICKELL, MIAMI



UPPER PENTHOUSE 1  
UPPER LEVEL



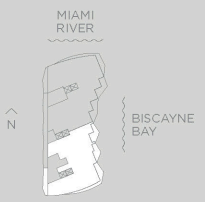
*Baccarat*  
RESIDENCES  
BRICKELL, MIAMI



**UPPER PENTHOUSE 2**  
72ND TO 73RD LEVELS  
MAIN LEVEL

3 BEDROOMS / 7.5 BATHROOMS  
LIBRARY / BILLIARDS / FAMILY ROOM MAID'S ROOM / BAR  
LOUNGE / ROOF TERRACE WITH POOL & SUMMER KITCHEN

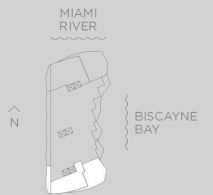
A/C INTERIOR AREA:	6,792 SQ. FT.	630.99 SQ. M.
TERRACE AREA:	2,318 SQ. FT.	215.35 SQ. M.
TOTAL RESIDENCE:	9,110 SQ. FT.	846.34 SQ. M.

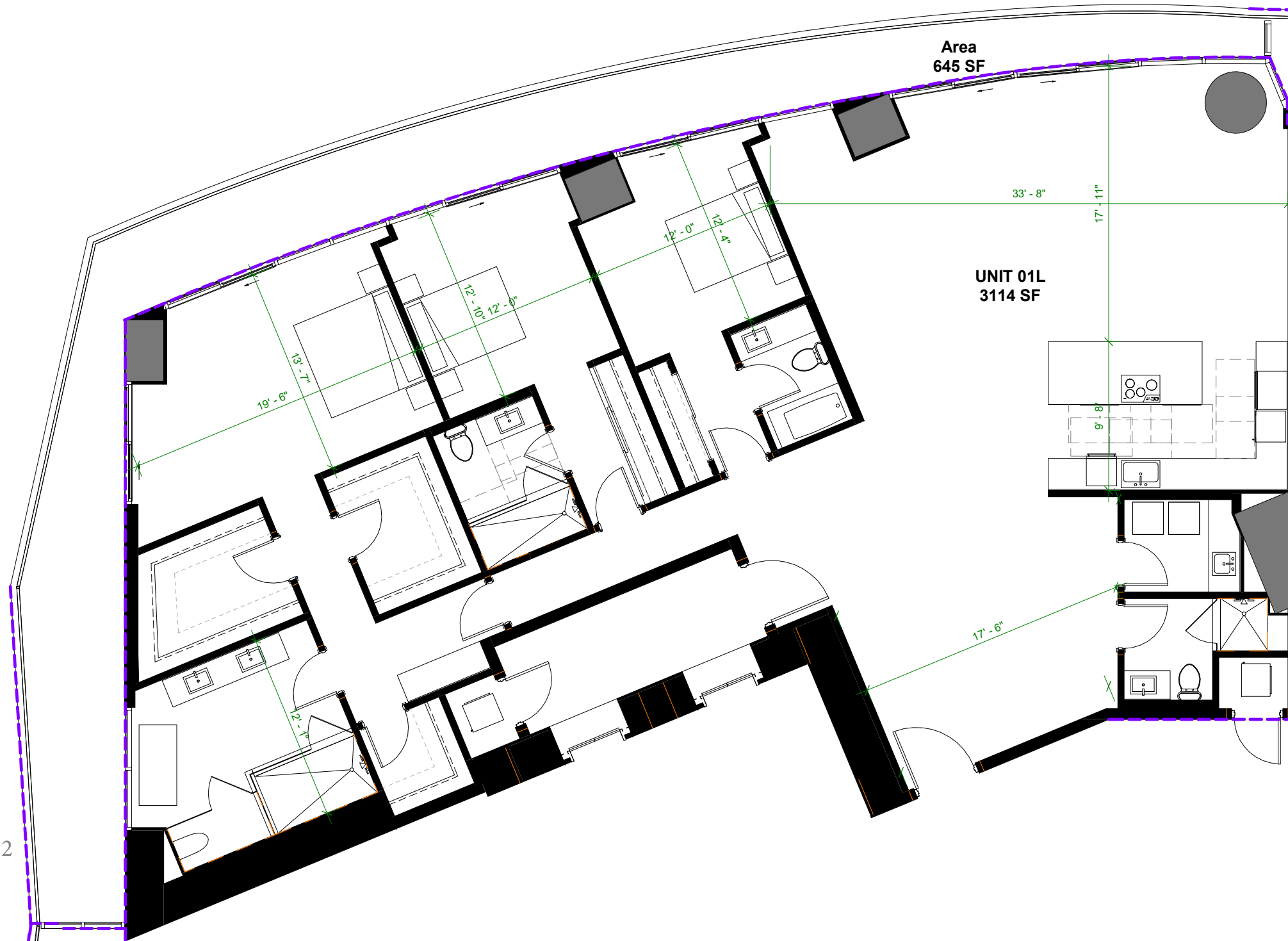






UPPER PENTHOUSE 2  
72ND TO 73RD LEVELS  
UPPER LEVEL



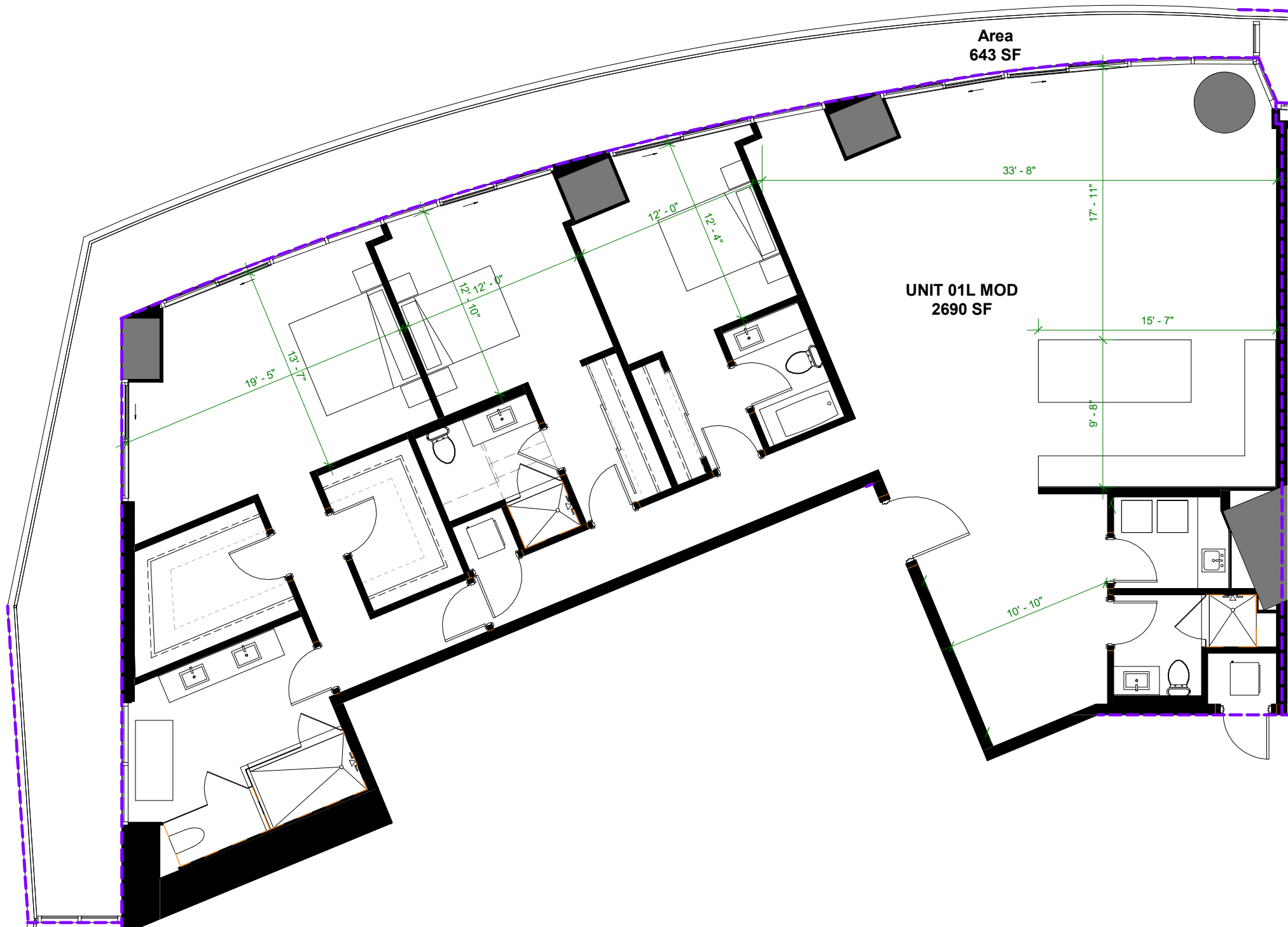


Residence 01 L MOD | Levels 2 & 12  
 3 BEDROOMS 4 BATHROOMS + DEN

A/C INTERIOR AREA:	3,114 SQ.FT.	289.30 SQ.M.
TERRACE AREA:	645 SQ.FT.	59.92 SQ.M.
TOTAL RESIDENCE:	3,759 SQ.FT.	349.22 SQ.M.

ORAL REPRESENTATIONS CANNOT BE RELIED UPON AS CORRECTLY STATING THE REPRESENTATIONS OF THE DEVELOPER. FOR CORRECT REPRESENTATIONS, REFERENCE SHOULD BE MADE TO THE DOCUMENTS REQUIRED BY SECTION 718.503, FLORIDA STATUTES, TO BE FURNISHED BY A DEVELOPER TO A BUYER OR LESSEE.

THE DIMENSIONS STATED FOR ANY DEPICTED UNIT FLOOR PLAN ARE APPROXIMATE BECAUSE THERE ARE VARIOUS RECOGNIZED METHODS FOR CALCULATING THE SQUARE FOOTAGE OF A UNIT. THE SQUARE FOOTAGE STATED HEREIN IS CALCULATED FROM THE EXTERIOR BOUNDARIES OF THE EXTERIOR WALLS TO THE CENTERLINE OF INTERIOR DEMISING WALLS WITHOUT DEDUCTIONS FOR CUTOUTS, CURVES, OR ARCHITECTURAL FEATURES. THIS METHOD TYPICALLY RESULTS IN QUOTED DIMENSIONS GREATER THAN THE DIMENSIONS THAT WOULD BE DETERMINED BY USING OTHER ACCEPTED METHODS. THE ILLUSTRATIONS AND IMAGES ARE CONCEPTUAL. THE FLOOR PLAN, UNIT LAYOUT, LOCATIONS OF WINDOWS, DOORS, CLOSETS, PLUMBING FIXTURES, MECHANICAL EQUIPMENT, APPLIANCES, STRUCTURAL ELEMENTS, ARCHITECTURAL DESIGN ELEMENTS, AND THE USES, CONFIGURATIONS, AND ENTRIES TO ROOMS MAY CHANGE BASED ON FINAL APPROVED PLANS, PERMITTING, AND COMPLETED CONSTRUCTION. THE FURNITURE LAYOUT AND THE USES OF SPACE ILLUSTRATED ARE SUGGESTED USES ONLY AND NOT INTENDED TO GUARANTY ANY SPECIFIC USE OF SPACE OR ACCOMMODATION OF SPECIFIC FURNISHINGS. FURNISHINGS, DESIGN FEATURES, FIXTURES, AND DÉCOR ILLUSTRATED ARE CONCEPTUAL AND MAY NOT BE INCLUDED WITH A UNIT PURCHASE. CONSULT THE DEVELOPER'S PROSPECTUS WHICH WILL BE PROVIDED TO YOU BY THE DEVELOPER TO LEARN WHAT IS INCLUDED WITH A UNIT PURCHASE AND TO REVIEW THE UNIT SQUARE FOOTAGE CALCULATION METHOD TO BE RELIED UPON, WHICH IS SET FORTH IN THE DEVELOPER'S PROSPECTUS. THE DEVELOPER, 444 BRICKELL ONE, LLC, IS A LICENSEE OF THE RELATED GROUP AND THE OWNER OF BACCARAT®, NEITHER OF WHICH IS THE DEVELOPER. 2021© WITH ALL RIGHTS RESERVED.



Area  
643 SF

UNIT 01L MOD  
2690 SF

Residence 01 L | Levels 3 to 6  
3 BEDROOMS 4 BATHROOMS + DEN

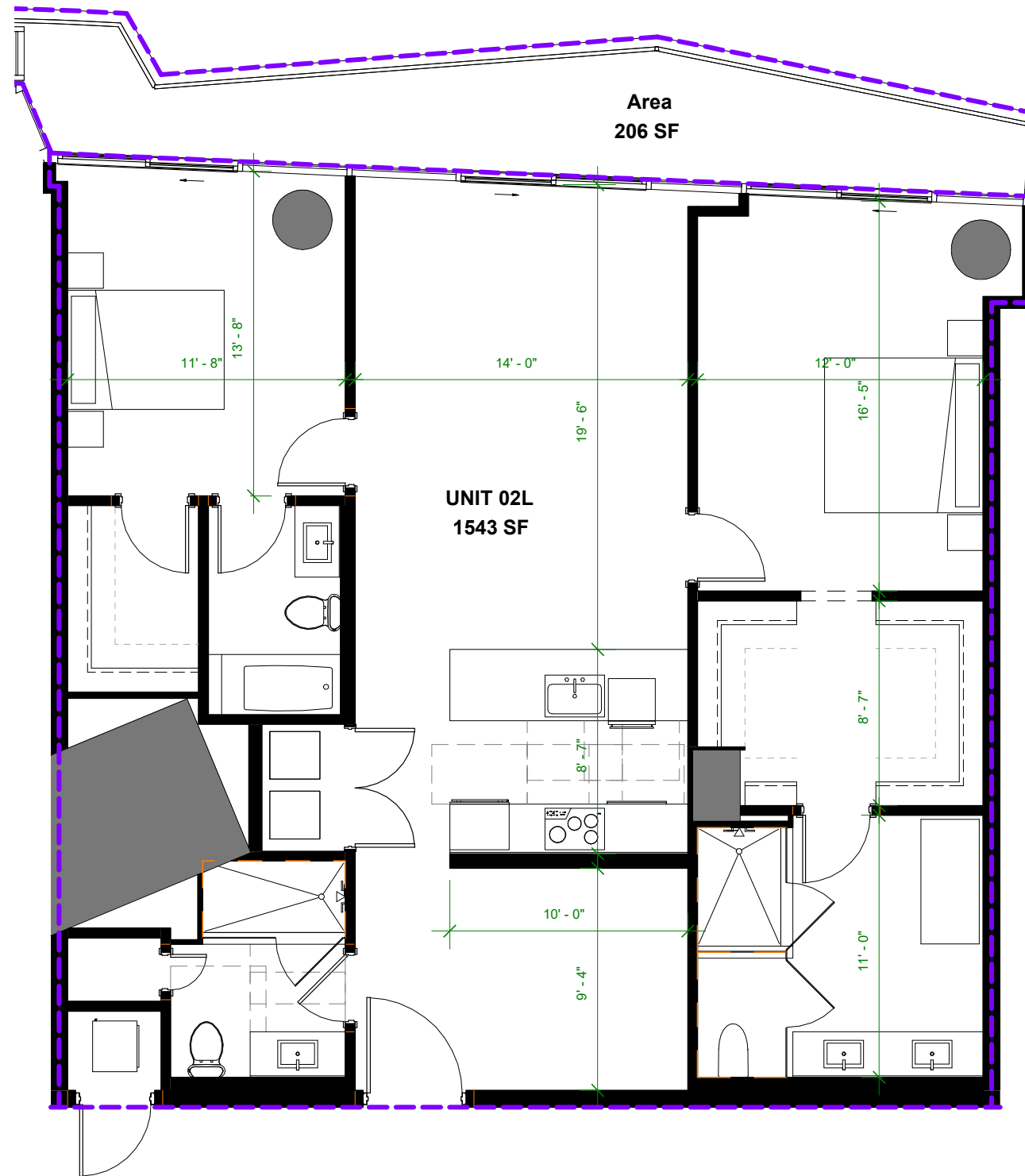
A/C INTERIOR AREA:	2,690 SQ.FT.	249.91 SQ.M.
TERRACE AREA:	643 SQ.FT.	59.73 SQ.M.
TOTAL RESIDENCE:	3,333 SQ.FT.	309.64 SQ.M.

ORAL REPRESENTATIONS CANNOT BE RELIED UPON AS CORRECTLY STATING THE REPRESENTATIONS OF THE DEVELOPER. FOR CORRECT REPRESENTATIONS, REFERENCE SHOULD BE MADE TO THE DOCUMENTS REQUIRED BY SECTION 718.503, FLORIDA STATUTES, TO BE FURNISHED BY A DEVELOPER TO A BUYER OR LESSEE.

THE DIMENSIONS STATED FOR ANY DEPICTED UNIT FLOOR PLAN ARE APPROXIMATE BECAUSE THERE ARE VARIOUS RECOGNIZED METHODS FOR CALCULATING THE SQUARE FOOTAGE OF A UNIT. THE SQUARE FOOTAGE STATED HEREIN IS CALCULATED FROM THE EXTERIOR BOUNDARIES OF THE EXTERIOR WALLS TO THE CENTERLINE OF INTERIOR DEMISING WALLS WITHOUT DEDUCTIONS FOR CUTOUTS, CURVES, OR ARCHITECTURAL FEATURES. THIS METHOD TYPICALLY RESULTS IN QUOTED DIMENSIONS GREATER THAN THE DIMENSIONS THAT WOULD BE DETERMINED BY USING OTHER ACCEPTED METHODS. THE ILLUSTRATIONS AND IMAGES ARE CONCEPTUAL. THE FLOOR PLAN, UNIT LAYOUT, LOCATIONS OF WINDOWS, DOORS, CLOSETS, PLUMBING FIXTURES, MECHANICAL EQUIPMENT, APPLIANCES, STRUCTURAL ELEMENTS, ARCHITECTURAL DESIGN ELEMENTS, AND THE USES, CONFIGURATIONS, AND ENTRIES TO ROOMS MAY CHANGE BASED ON FINAL APPROVED PLANS, PERMITTING, AND COMPLETED CONSTRUCTION. THE FURNITURE LAYOUT AND THE USES OF SPACE ILLUSTRATED ARE SUGGESTED USES ONLY AND NOT INTENDED TO GUARANTY ANY SPECIFIC USE OF SPACE OR ACCOMMODATION OF SPECIFIC FURNISHINGS. FURNISHINGS, DESIGN FEATURES, FIXTURES, AND DÉCOR ILLUSTRATED ARE CONCEPTUAL AND MAY NOT BE INCLUDED WITH A UNIT PURCHASE. CONSULT THE DEVELOPER'S PROSPECTUS WHICH WILL BE PROVIDED TO YOU BY THE DEVELOPER TO LEARN WHAT IS INCLUDED WITH A UNIT PURCHASE AND TO REVIEW THE UNIT SQUARE FOOTAGE CALCULATION METHOD TO BE RELIED UPON, WHICH IS SET FORTH IN THE DEVELOPER'S PROSPECTUS. THE DEVELOPER, 444 BRICKELL ONE, LLC, IS A LICENSEE OF THE RELATED GROUP AND THE OWNER OF BACCARAT®, NEITHER OF WHICH IS THE DEVELOPER. 2021© WITH ALL RIGHTS RESERVED.

Residence 02 L | Levels 2 to 6 & 12  
 2 BEDROOMS 3 BATHROOMS + DEN

A/C INTERIOR AREA:	1,543 SQ.FT.	143.35 SQ.M.
TERRACE AREA:	206 SQ.FT.	19.13 SQ.M.
TOTAL RESIDENCE:	1,749 SQ.FT.	162.48 SQ.M.



ORAL REPRESENTATIONS CANNOT BE RELIED UPON AS CORRECTLY STATING THE REPRESENTATIONS OF THE DEVELOPER. FOR CORRECT REPRESENTATIONS, REFERENCE SHOULD BE MADE TO THE DOCUMENTS REQUIRED BY SECTION 718.503, FLORIDA STATUTES, TO BE FURNISHED BY A DEVELOPER TO A BUYER OR LESSEE.

THE DIMENSIONS STATED FOR ANY DEPICTED UNIT FLOOR PLAN ARE APPROXIMATE BECAUSE THERE ARE VARIOUS RECOGNIZED METHODS FOR CALCULATING THE SQUARE FOOTAGE OF A UNIT. THE SQUARE FOOTAGE STATED HEREIN IS CALCULATED FROM THE EXTERIOR BOUNDARIES OF THE EXTERIOR WALLS TO THE CENTERLINE OF INTERIOR DEMISING WALLS WITHOUT DEDUCTIONS FOR CUTOUTS, CURVES, OR ARCHITECTURAL FEATURES. THIS METHOD TYPICALLY RESULTS IN QUOTED DIMENSIONS GREATER THAN THE DIMENSIONS THAT WOULD BE DETERMINED BY USING OTHER ACCEPTED METHODS. THE ILLUSTRATIONS AND IMAGES ARE CONCEPTUAL. THE FLOOR PLAN, UNIT LAYOUT, LOCATIONS OF WINDOWS, DOORS, CLOSETS, PLUMBING FIXTURES, MECHANICAL EQUIPMENT, APPLIANCES, STRUCTURAL ELEMENTS, ARCHITECTURAL DESIGN ELEMENTS, AND THE USES, CONFIGURATIONS, AND ENTRIES TO ROOMS MAY CHANGE BASED ON FINAL APPROVED PLANS, PERMITTING, AND COMPLETED CONSTRUCTION. THE FURNITURE LAYOUT AND THE USES OF SPACE ILLUSTRATED ARE SUGGESTED USES ONLY AND NOT INTENDED TO GUARANTY ANY SPECIFIC USE OF SPACE OR ACCOMMODATION OF SPECIFIC FURNISHINGS. FURNISHINGS, DESIGN FEATURES, FIXTURES, AND DÉCOR ILLUSTRATED ARE CONCEPTUAL AND MAY NOT BE INCLUDED WITH A UNIT PURCHASE. CONSULT THE DEVELOPER'S PROSPECTUS WHICH WILL BE PROVIDED TO YOU BY THE DEVELOPER TO LEARN WHAT IS INCLUDED WITH A UNIT PURCHASE AND TO REVIEW THE UNIT SQUARE FOOTAGE CALCULATION METHOD TO BE RELIED UPON, WHICH IS SET FORTH IN THE DEVELOPER'S PROSPECTUS. THE DEVELOPER, 444 BRICKELL ONE, LLC, IS A LICENSEE OF THE RELATED GROUP AND THE OWNER OF BACCARAT®, NEITHER OF WHICH IS THE DEVELOPER. 2021© WITH ALL RIGHTS RESERVED.



## Residence 03 L | Levels 2 to 6 & 12

2 BEDROOMS 3 BATHROOMS + DEN

A/C INTERIOR AREA:	1,680 SQ.FT.	156.07 SQ.M.
TERRACE AREA:	209 SQ.FT.	19.41 SQ.M.
TOTAL RESIDENCE:	1,889 SQ.FT.	175.48 SQ.M.

ORAL REPRESENTATIONS CANNOT BE RELIED UPON AS CORRECTLY STATING THE REPRESENTATIONS OF THE DEVELOPER. FOR CORRECT REPRESENTATIONS, REFERENCE SHOULD BE MADE TO THE DOCUMENTS REQUIRED BY SECTION 718.503, FLORIDA STATUTES, TO BE FURNISHED BY A DEVELOPER TO A BUYER OR LESSEE.

THE DIMENSIONS STATED FOR ANY DEPICTED UNIT FLOOR PLAN ARE APPROXIMATE BECAUSE THERE ARE VARIOUS RECOGNIZED METHODS FOR CALCULATING THE SQUARE FOOTAGE OF A UNIT. THE SQUARE FOOTAGE STATED HEREIN IS CALCULATED FROM THE EXTERIOR BOUNDARIES OF THE EXTERIOR WALLS TO THE CENTERLINE OF INTERIOR DEMISING WALLS WITHOUT DEDUCTIONS FOR CUTOUTS, CURVES, OR ARCHITECTURAL FEATURES. THIS METHOD TYPICALLY RESULTS IN QUOTED DIMENSIONS GREATER THAN THE DIMENSIONS THAT WOULD BE DETERMINED BY USING OTHER ACCEPTED METHODS. THE ILLUSTRATIONS AND IMAGES ARE CONCEPTUAL. THE FLOOR PLAN, UNIT LAYOUT, LOCATIONS OF WINDOWS, DOORS, CLOSETS, PLUMBING FIXTURES, MECHANICAL EQUIPMENT, APPLIANCES, STRUCTURAL ELEMENTS, ARCHITECTURAL DESIGN ELEMENTS, AND THE USES, CONFIGURATIONS, AND ENTRIES TO ROOMS MAY CHANGE BASED ON FINAL APPROVED PLANS, PERMITTING, AND COMPLETED CONSTRUCTION. THE FURNITURE LAYOUT AND THE USES OF SPACE ILLUSTRATED ARE SUGGESTED USES ONLY AND NOT INTENDED TO GUARANTY ANY SPECIFIC USE OF SPACE OR ACCOMMODATION OF SPECIFIC FURNISHINGS. FURNISHINGS, DESIGN FEATURES, FIXTURES, AND DÉCOR ILLUSTRATED ARE CONCEPTUAL AND MAY NOT BE INCLUDED WITH A UNIT PURCHASE. CONSULT THE DEVELOPER'S PROSPECTUS WHICH WILL BE PROVIDED TO YOU BY THE DEVELOPER TO LEARN WHAT IS INCLUDED WITH A UNIT PURCHASE AND TO REVIEW THE UNIT SQUARE FOOTAGE CALCULATION METHOD TO BE RELIED UPON, WHICH IS SET FORTH IN THE DEVELOPER'S PROSPECTUS. THE DEVELOPER, 444 BRICKELL ONE, LLC, IS A LICENSEE OF THE RELATED GROUP AND THE OWNER OF BACCARAT®, NEITHER OF WHICH IS THE DEVELOPER. 2021© WITH ALL RIGHTS RESERVED.



Residence 04 L | Levels 2 to 6 & 12  
2 BEDROOMS 3 BATHROOMS + DEN

A/C INTERIOR AREA:	1,590 SQ.FT.	147.72 SQ.M.
TERRACE AREA:	212 SQ.FT.	19.69 SQ.M.
TOTAL RESIDENCE:	1,802 SQ.FT.	167.41 SQ.M.

ORAL REPRESENTATIONS CANNOT BE RELIED UPON AS CORRECTLY STATING THE REPRESENTATIONS OF THE DEVELOPER. FOR CORRECT REPRESENTATIONS, REFERENCE SHOULD BE MADE TO THE DOCUMENTS REQUIRED BY SECTION 718.503, FLORIDA STATUTES, TO BE FURNISHED BY A DEVELOPER TO A BUYER OR LESSEE.

THE DIMENSIONS STATED FOR ANY DEPICTED UNIT FLOOR PLAN ARE APPROXIMATE BECAUSE THERE ARE VARIOUS RECOGNIZED METHODS FOR CALCULATING THE SQUARE FOOTAGE OF A UNIT. THE SQUARE FOOTAGE STATED HEREIN IS CALCULATED FROM THE EXTERIOR BOUNDARIES OF THE EXTERIOR WALLS TO THE CENTERLINE OF INTERIOR DEMISING WALLS WITHOUT DEDUCTIONS FOR CUTOUTS, CURVES, OR ARCHITECTURAL FEATURES. THIS METHOD TYPICALLY RESULTS IN QUOTED DIMENSIONS GREATER THAN THE DIMENSIONS THAT WOULD BE DETERMINED BY USING OTHER ACCEPTED METHODS. THE ILLUSTRATIONS AND IMAGES ARE CONCEPTUAL. THE FLOOR PLAN, UNIT LAYOUT, LOCATIONS OF WINDOWS, DOORS, CLOSETS, PLUMBING FIXTURES, MECHANICAL EQUIPMENT, APPLIANCES, STRUCTURAL ELEMENTS, ARCHITECTURAL DESIGN ELEMENTS, AND THE USES, CONFIGURATIONS, AND ENTRIES TO ROOMS MAY CHANGE BASED ON FINAL APPROVED PLANS, PERMITTING, AND COMPLETED CONSTRUCTION. THE FURNITURE LAYOUT AND THE USES OF SPACE ILLUSTRATED ARE SUGGESTED USES ONLY AND NOT INTENDED TO GUARANTY ANY SPECIFIC USE OF SPACE OR ACCOMMODATION OF SPECIFIC FURNISHINGS. FURNISHINGS, DESIGN FEATURES, FIXTURES, AND DÉCOR ILLUSTRATED ARE CONCEPTUAL AND MAY NOT BE INCLUDED WITH A UNIT PURCHASE. CONSULT THE DEVELOPER'S PROSPECTUS WHICH WILL BE PROVIDED TO YOU BY THE DEVELOPER TO LEARN WHAT IS INCLUDED WITH A UNIT PURCHASE AND TO REVIEW THE UNIT SQUARE FOOTAGE CALCULATION METHOD TO BE RELIED UPON, WHICH IS SET FORTH IN THE DEVELOPER'S PROSPECTUS. THE DEVELOPER, 444 BRICKELL ONE, LLC, IS A LICENSEE OF THE RELATED GROUP AND THE OWNER OF BACCARAT®, NEITHER OF WHICH IS THE DEVELOPER. 2021© WITH ALL RIGHTS RESERVED.