

PRICE LIST

ONE - BEDROOM RESIDENCES

UNIT	MODEL	UNIT TYPE	SQ. FT. (A/C)	PRICE	VIEW
603	A1	1 BED / 1 BATH	750	\$855,000	BAY/NORTH
408	A1	1 BED / 1 BATH	750	\$868,000	BAY/SOUTH
1002	A1	1 BED / 1 BATH	750	\$890,000	BAY/NORTH
317	A2	1 BED / 1 BATH + DEN	881	\$945,000	BAY/NORTH
916	A2	1 BED / 1 BATH + DEN	871	\$975,000	BAY/NORTH
601	A3	1 BED / 1.5 BATHS	1,187	\$1,049,000	BAY/NORTH

TWO - BEDROOM RESIDENCES

UNIT	MODEL	UNIT TYPE	SQ. FT. (A/C)	PRICE	VIEW
505	B3	2 BEDS / 2 BATHS	1,203	\$1,225,000	BAY/SOUTH
706	B1A	2 BEDS / 2 BATHS	1,093	\$1,255,000	BAY/SOUTH
711	B1	2 BEDS / 2 BATHS	1,085	\$1,246,000	BAY/SOUTH
513	B5	2 BEDS / 2 BATHS	1,253	\$1,255,000	BAY/NORTH
909	B4	2 BEDS / 2 BATHS	1,214	\$1,281,000	BAY/SOUTH

THREE - BEDROOM RESIDENCES

UNIT	MODEL	UNIT TYPE	SQ. FT. (A/C)	PRICE	VIEW
512	C1	3 BEDS / 2 BATHS	1,443	\$1,545,000	BAY/SOUTH

PENTHOUSE RESIDENCES

PRICING UPON REQUEST



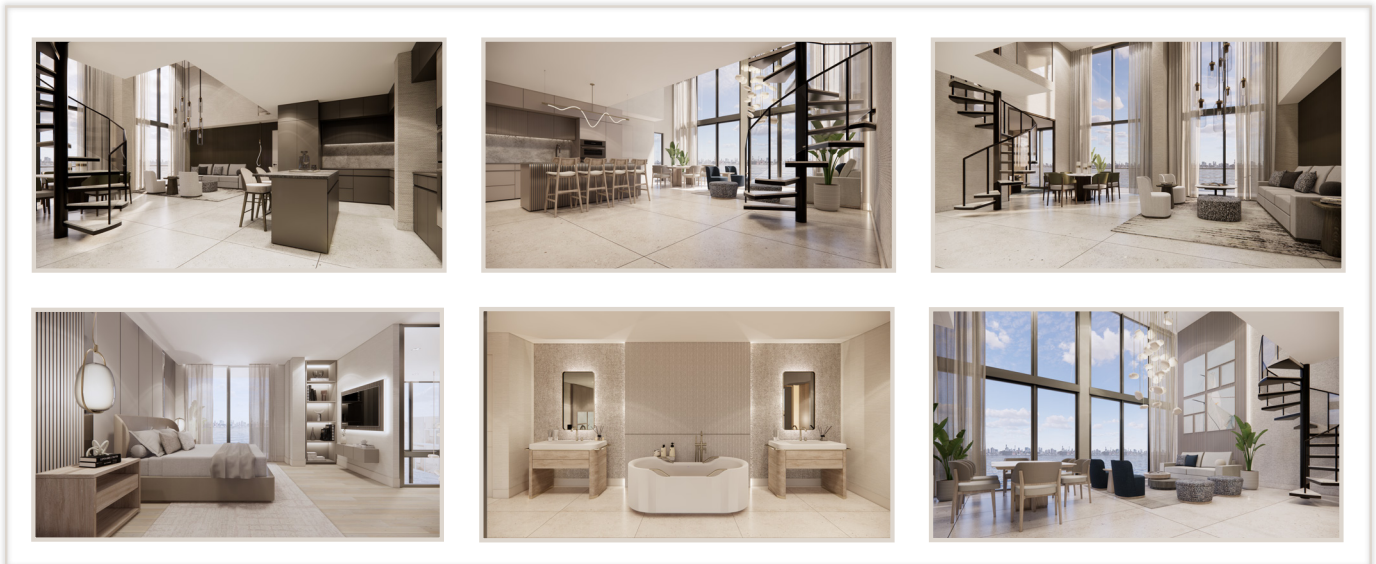
PRICES AND AVAILABILITY ARE SUBJECT TO CHANGE WITHOUT NOTICE

SHOMA Exclusive Sales & Marketing by ISGWORLD



## PENTHOUSE PRICE LIST

UNIT	VIEW	MODEL	UNIT TYPE	SF	PRICE	\$PSF
PH04	NORTH	1	2 BEDS / 2.5 BATHS + DEN	1,979	\$3,120,000	\$1,577
PH06	SOUTH	1	2 BEDS / 2.5 BATHS + DEN	1,979	\$3,270,000	\$1,652
PH01	NORTH	2	2 BEDS / 2 BATHS	2,062	\$3,170,000	\$1,537
PH13	NORTH	5	3 BEDS / 3.5 BATHS	2,144	\$3,445,000	\$1,607
PH16	NORTH	6	3 BEDS / 3.5 BATHS (DEN OPTION)	2,964	\$5,320,000	\$1,795
PH02	NORTH	7	3 BEDS / 4 BATHS + DEN + LOFT	2,760	\$4,120,000	\$1,496



PRICES AND AVAILABILITY ARE SUBJECT TO CHANGE WITHOUT NOTICE

SHOMA - Exclusive Sales & Marketing by ISGWORLD®

ANY RENDERINGS AND DEPICTIONS ARE CONCEPTUAL ONLY AND ARE FOR THE CONVENIENCE OF REFERENCE. THEY SHOULD NOT BE RELIED UPON AS REPRESENTATIONS, EXPRESS OR IMPLIED, OF THE FINAL DETAIL OF THE UNITS NOR THE VIEWS FROM ANY OF THE UNITS. ORAL REPRESENTATIONS CANNOT BE RELIED UPON AS CORRECTLY STATING REPRESENTATIONS OF THE DEVELOPER. FOR CORRECT REPRESENTATIONS, MAKE REFERENCE TO THIS BROCHURE AND TO THE DOCUMENTS.

