

THE
DELMORE
SUNSHINE BEACH MIAMI

5 BED FLOORPLANS

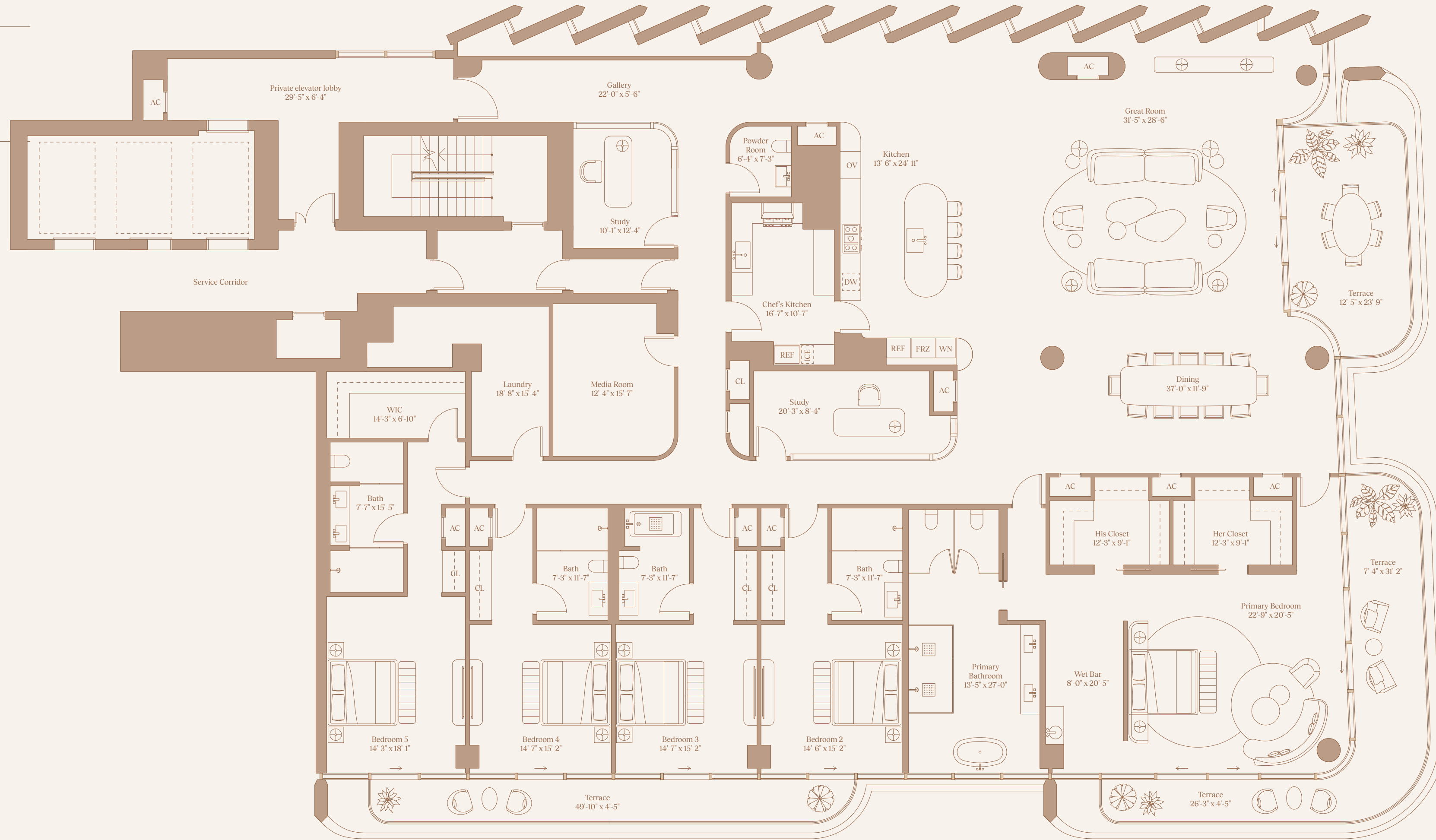
THE
DELMORE
SURFSIDE MIAMI

RESIDENCE 202

5 Bedroom
5.5 Bathroom

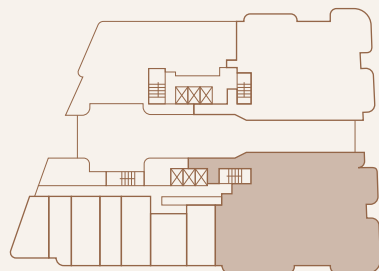
Total Interior
7,574.29 FT² / 703.67 M²

Total Exterior
960.08 FT² / 89.19 M²



ATLANTIC OCEAN

COLLINS AVE



OCEAN





8777 Collins Ave, Surfside, FL 33154

TheDelmore.com
+1 305 902 3301
sales@thedelmore.com

Exclusive Sales & Marketing
Douglas Elliman

DAMAC

Stated dimensions are measured to the exterior boundaries of the exterior walls and the centerline of interior demising walls and in fact vary from the dimensions that would be determined by using the description and definition of the "Unit" set forth in the Declaration (which generally only includes the interior airspace between the perimeter walls and excludes interior structural components). Refer to the Declaration included in the Condominium Documents for the area of the Unit, determined in accordance with those defined unit boundaries. Note that measurements of rooms set forth on this floor plan are generally taken at the greatest points of each given room (as if the room were a perfect rectangle), without regard for any cutouts. Accordingly, the area of the actual room will typically be smaller than the product obtained by multiplying the stated length times width. All dimensions are approximate and may vary with actual construction, and all floor plans and development plans are subject to change. All depictions of appliances, counters, soffits, floor coverings, furniture and other matters of detail, including, without limitation, items of finish and decoration, are conceptual only and are not necessarily included in each Unit.

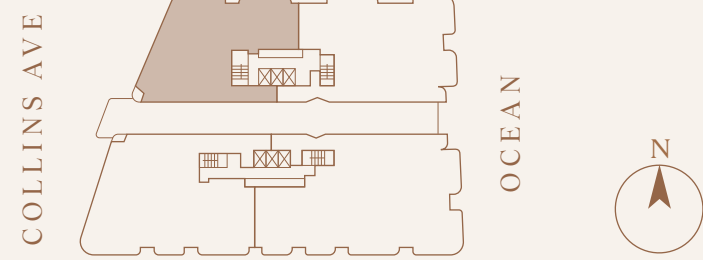
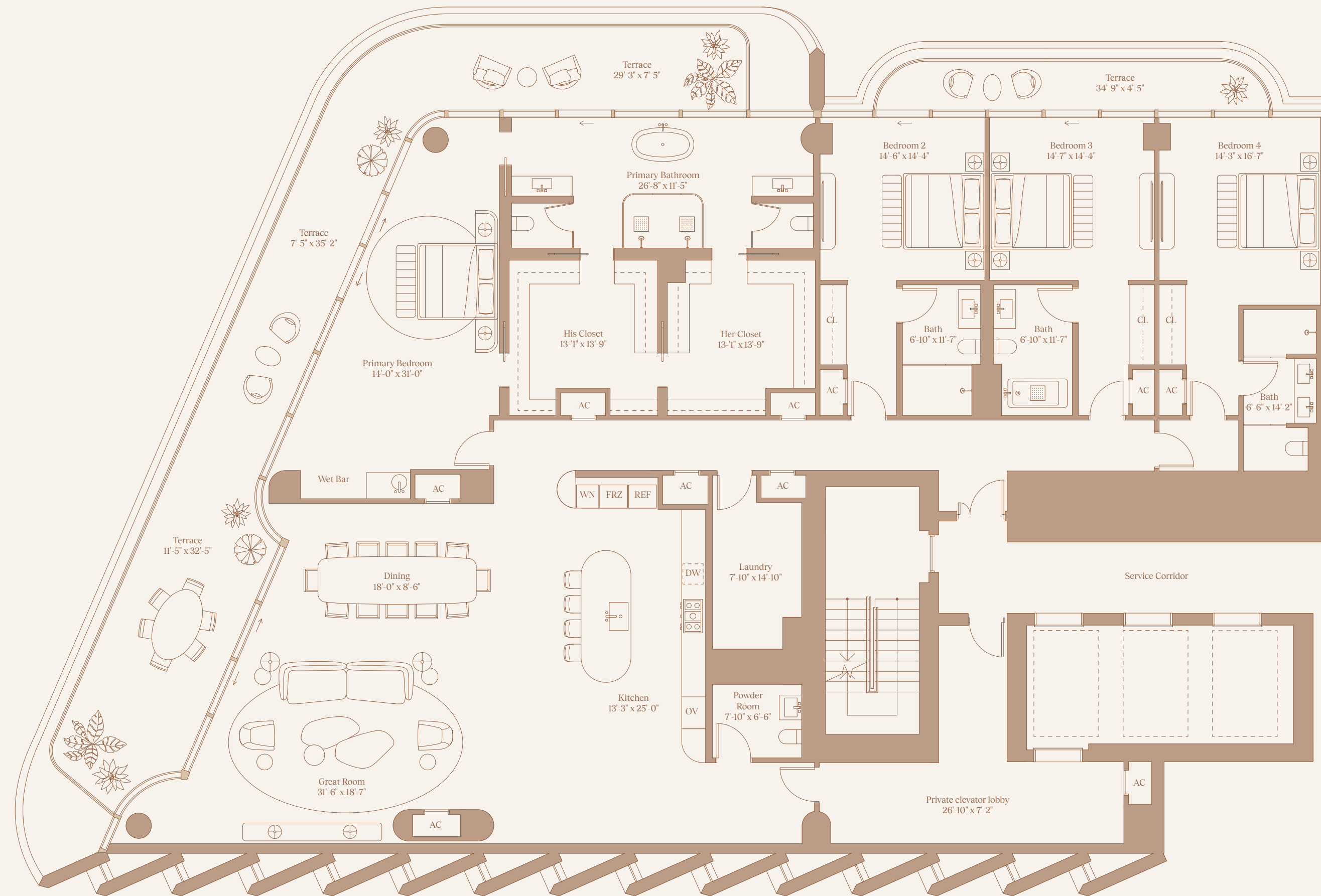
THE
DELMORE
SUNSHINE BEACH MIAMI

4 BED FLOORPLANS

RESIDENCE 303

4 Bedroom
 4.5 Bathroom

Total Interior
 5,087.80 FT² / 472.67 M²
 Total Exterior
 1,075.30 FT² / 99.90 M²





8777 Collins Ave, Surfside, FL 33154

TheDelmore.com
+1 305 902 3301
sales@thedelmore.com

Exclusive Sales & Marketing
Douglas Elliman

DAMAC

Stated dimensions are measured to the exterior boundaries of the exterior walls and the centerline of interior demising walls and in fact vary from the dimensions that would be determined by using the description and definition of the "Unit" set forth in the Declaration (which generally only includes the interior airspace between the perimeter walls and excludes interior structural components). Refer to the Declaration included in the Condominium Documents for the area of the Unit, determined in accordance with those defined unit boundaries. Note that measurements of rooms set forth on this floor plan are generally taken at the greatest points of each given room (as if the room were a perfect rectangle), without regard for any cutouts. Accordingly, the area of the actual room will typically be smaller than the product obtained by multiplying the stated length times width. All dimensions are approximate and may vary with actual construction, and all floor plans and development plans are subject to change. All depictions of appliances, counters, soffits, floor coverings, furniture and other matters of detail, including, without limitation, items of finish and decoration, are conceptual only and are not necessarily included in each Unit.

THE
DELMORE
SUNSHINE BEACH MIAMI

5 BED FLOORPLANS

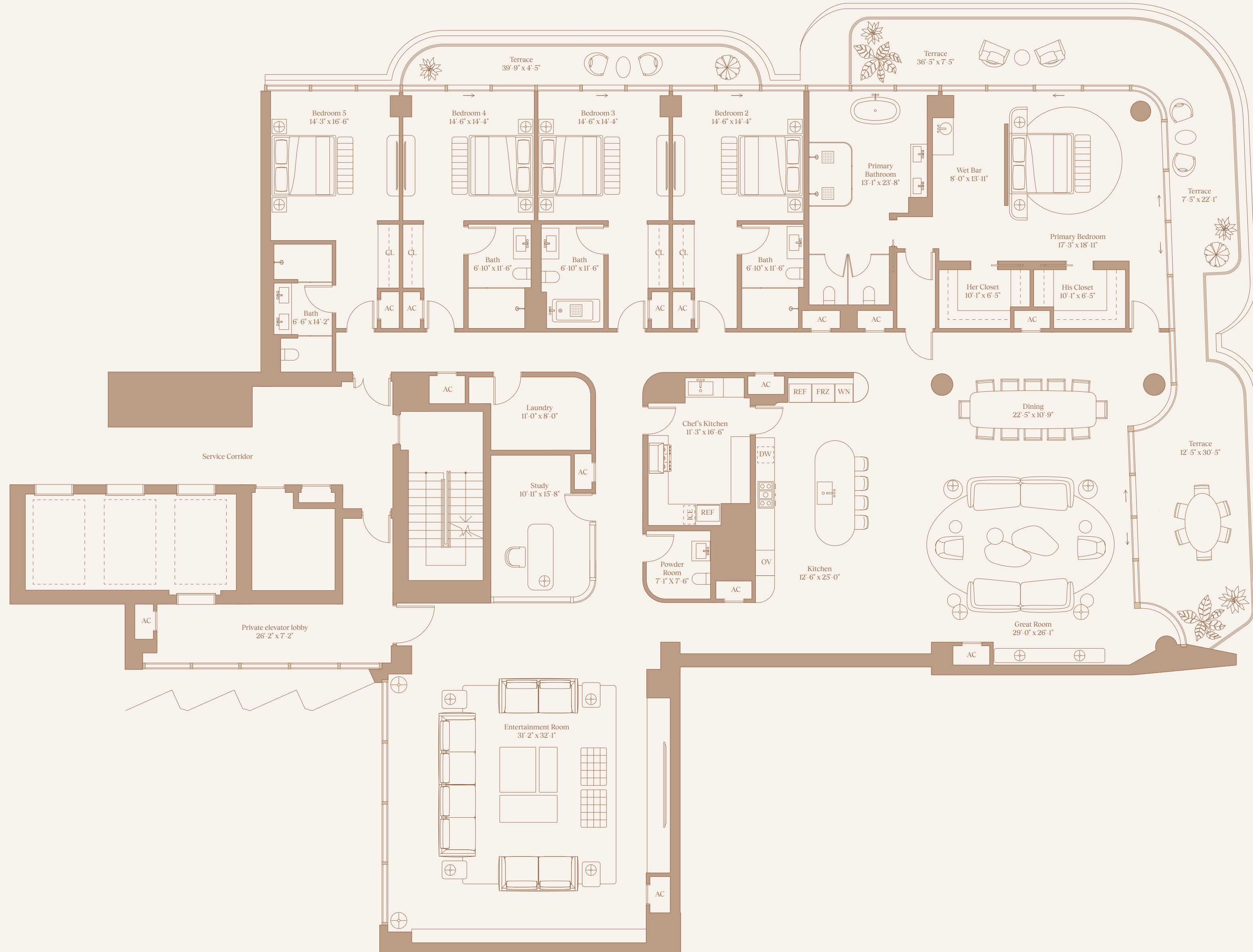
THE
DELMORE
 SURFSIDE MIAMI

RESIDENCE 501

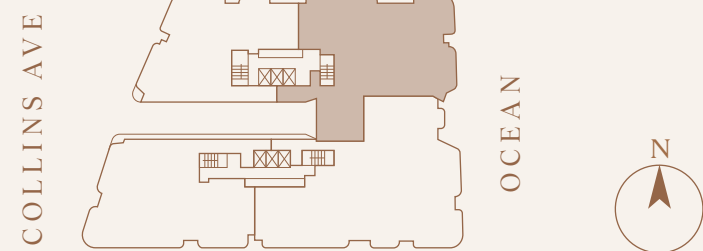
5 Bedroom
 5.5 Bathroom

Total Interior
 6,924.12 FT² / 643.27 M²

Total Exterior
 1,073.09 FT² / 99.69 M²



ATLANTIC OCEAN





8777 Collins Ave, Surfside, FL 33154

TheDelmore.com
+1 305 902 3301
sales@thedelmore.com

Exclusive Sales & Marketing
Douglas Elliman

DAMAC

Stated dimensions are measured to the exterior boundaries of the exterior walls and the centerline of interior demising walls and in fact vary from the dimensions that would be determined by using the description and definition of the "Unit" set forth in the Declaration (which generally only includes the interior airspace between the perimeter walls and excludes interior structural components). Refer to the Declaration included in the Condominium Documents for the area of the Unit, determined in accordance with those defined unit boundaries. Note that measurements of rooms set forth on this floor plan are generally taken at the greatest points of each given room (as if the room were a perfect rectangle), without regard for any cutouts. Accordingly, the area of the actual room will typically be smaller than the product obtained by multiplying the stated length times width. All dimensions are approximate and may vary with actual construction, and all floor plans and development plans are subject to change. All depictions of appliances, counters, soffits, floor coverings, furniture and other matters of detail, including, without limitation, items of finish and decoration, are conceptual only and are not necessarily included in each Unit.

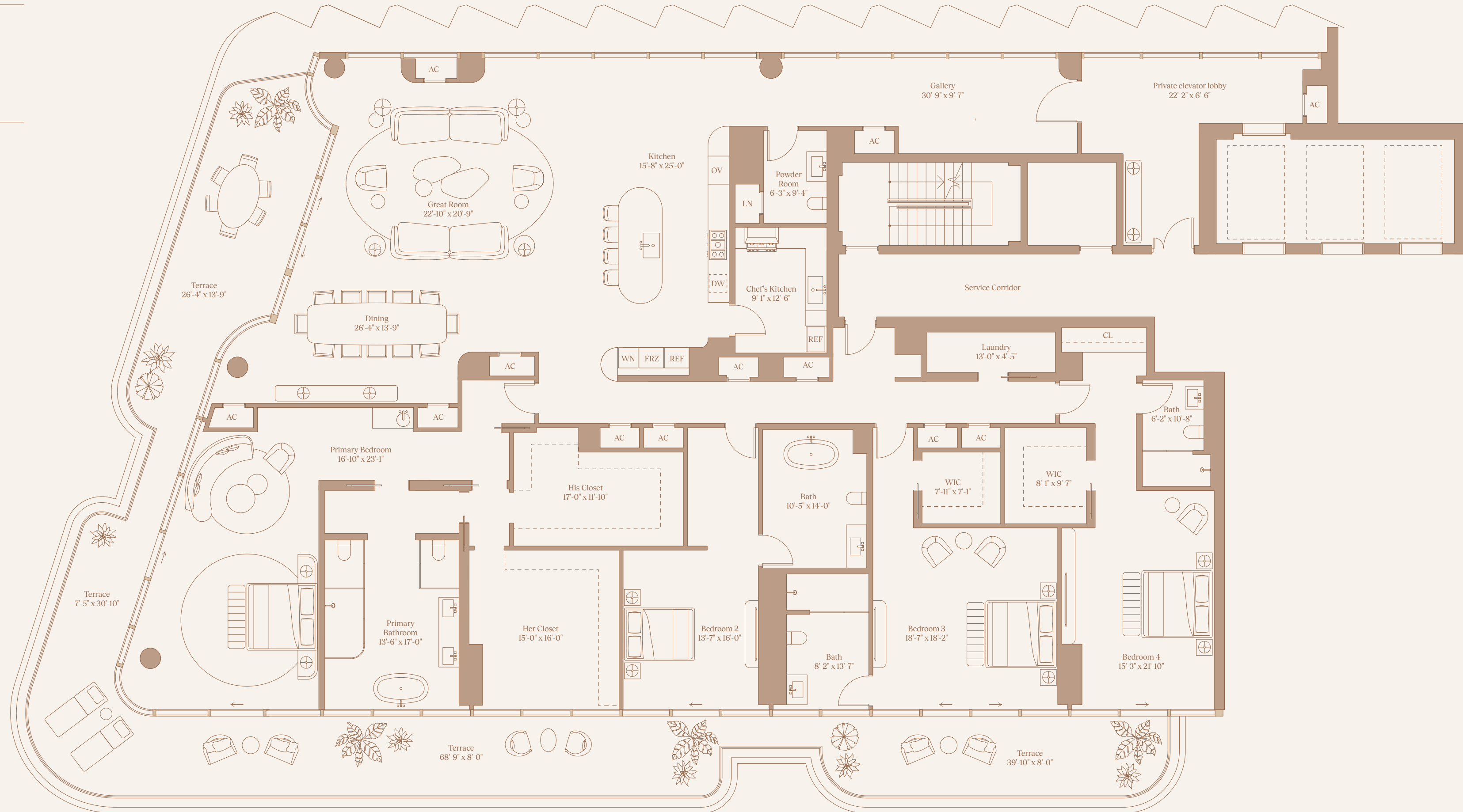
THE
DELMORE
SUNSHINE BEACH MIAMI

4 BED FLOORPLANS

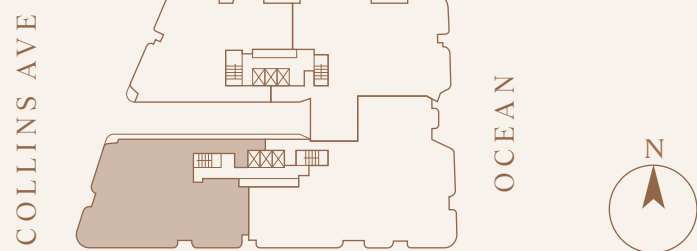
RESIDENCE 604

4 Bedroom
 4.5 Bathroom

Total Interior
 6,110.57 FT² / 567.69 M²
 Total Exterior
 1,533.16 FT² / 142.44 M²



ATLANTIC OCEAN





8777 Collins Ave, Surfside, FL 33154

TheDelmore.com
+1 305 902 3301
sales@thedelmore.com

Exclusive Sales & Marketing
Douglas Elliman

DAMAC

Stated dimensions are measured to the exterior boundaries of the exterior walls and the centerline of interior demising walls and in fact vary from the dimensions that would be determined by using the description and definition of the "Unit" set forth in the Declaration (which generally only includes the interior airspace between the perimeter walls and excludes interior structural components). Refer to the Declaration included in the Condominium Documents for the area of the Unit, determined in accordance with those defined unit boundaries. Note that measurements of rooms set forth on this floor plan are generally taken at the greatest points of each given room (as if the room were a perfect rectangle), without regard for any cutouts. Accordingly, the area of the actual room will typically be smaller than the product obtained by multiplying the stated length times width. All dimensions are approximate and may vary with actual construction, and all floor plans and development plans are subject to change. All depictions of appliances, counters, soffits, floor coverings, furniture and other matters of detail, including, without limitation, items of finish and decoration, are conceptual only and are not necessarily included in each Unit.

THE
DELMORE
SUNSHINE BEACH MIAMI

5 BED FLOORPLANS

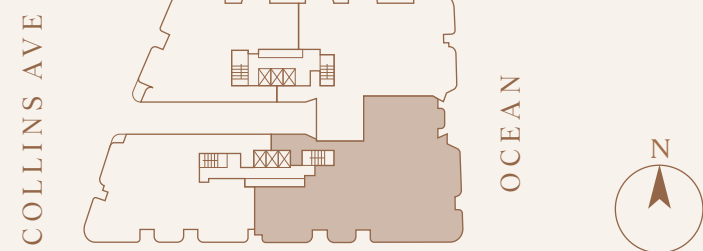
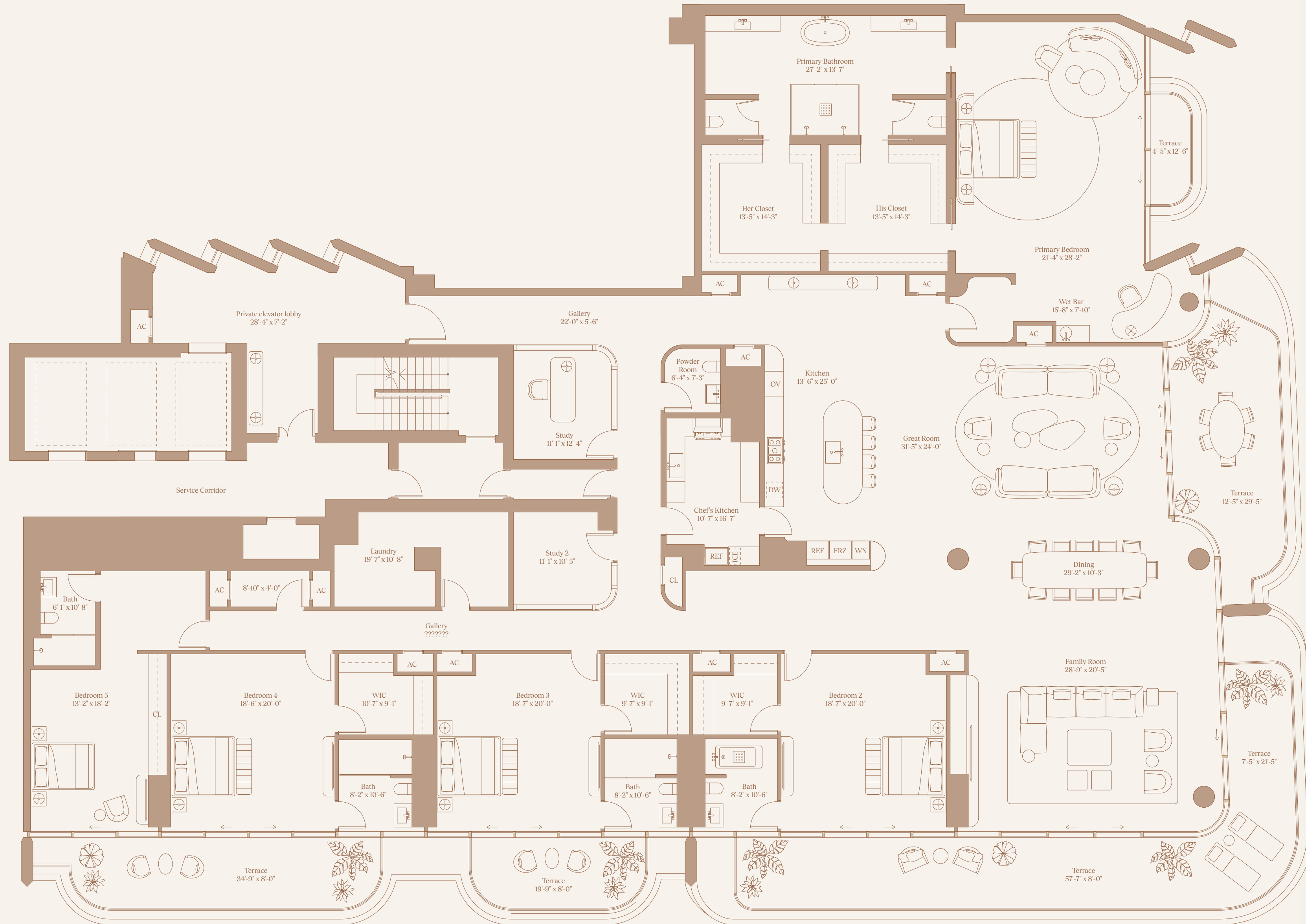
THE
DELMORE
 SURFSIDE MIAMI

RESIDENCE 702

5 Bedroom
 5.5 Bathroom

Total Interior
 8,723.71 FT² / 810.46 M²

Total Exterior
 1,695.48 FT² / 157.52 M²



ATLANTIC OCEAN



8777 Collins Ave, Surfside, FL 33154

TheDelmore.com
+1 305 902 3301
sales@thedelmore.com

Exclusive Sales & Marketing
Douglas Elliman

DAMAC

Stated dimensions are measured to the exterior boundaries of the exterior walls and the centerline of interior demising walls and in fact vary from the dimensions that would be determined by using the description and definition of the "Unit" set forth in the Declaration (which generally only includes the interior airspace between the perimeter walls and excludes interior structural components). Refer to the Declaration included in the Condominium Documents for the area of the Unit, determined in accordance with those defined unit boundaries. Note that measurements of rooms set forth on this floor plan are generally taken at the greatest points of each given room (as if the room were a perfect rectangle), without regard for any cutouts. Accordingly, the area of the actual room will typically be smaller than the product obtained by multiplying the stated length times width. All dimensions are approximate and may vary with actual construction, and all floor plans and development plans are subject to change. All depictions of appliances, counters, soffits, floor coverings, furniture and other matters of detail, including, without limitation, items of finish and decoration, are conceptual only and are not necessarily included in each Unit.

THE
DELMORE
SUNSHINE BEACH MIAMI

4 BED FLOORPLANS

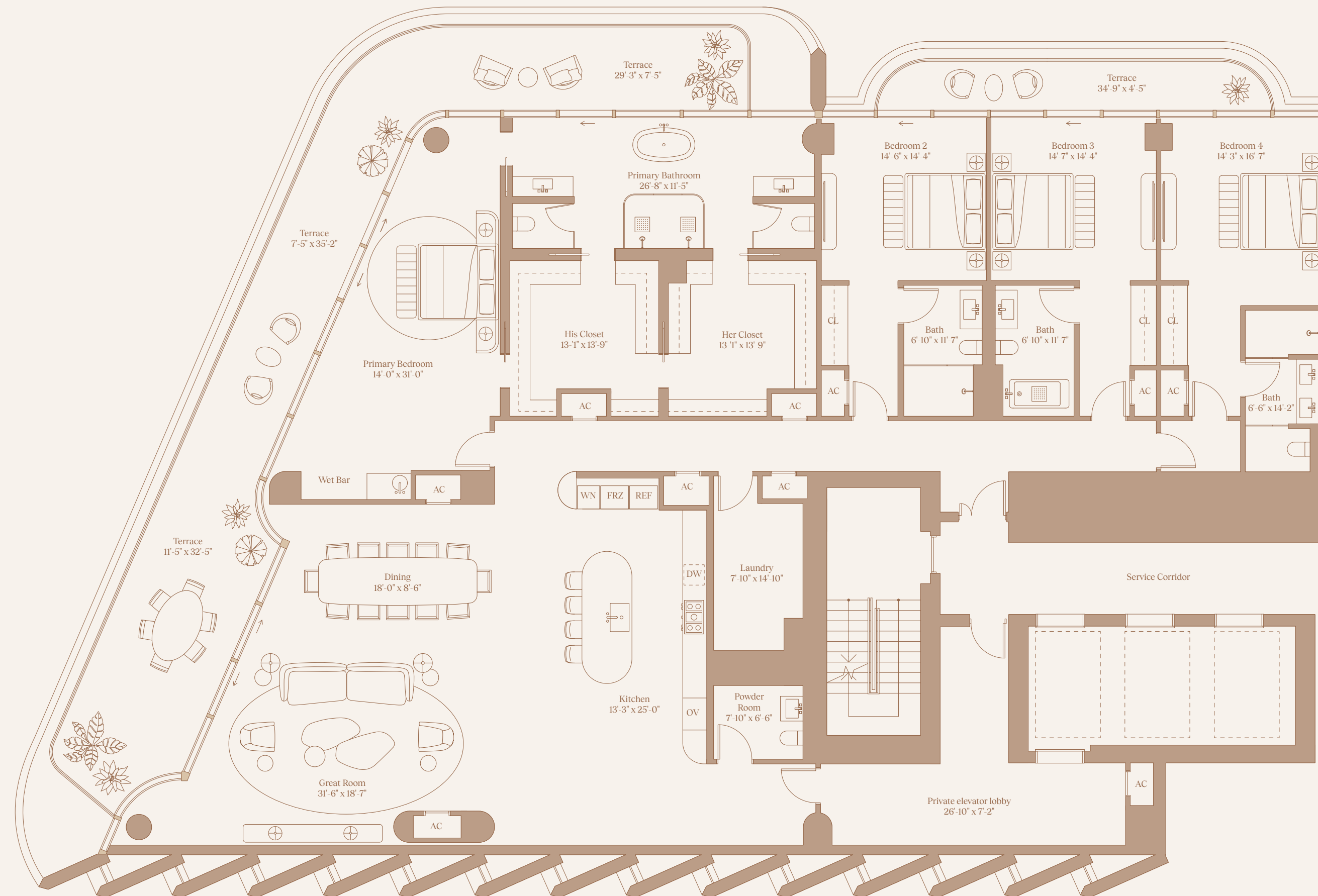
RESIDENCE 803

4 Bedroom

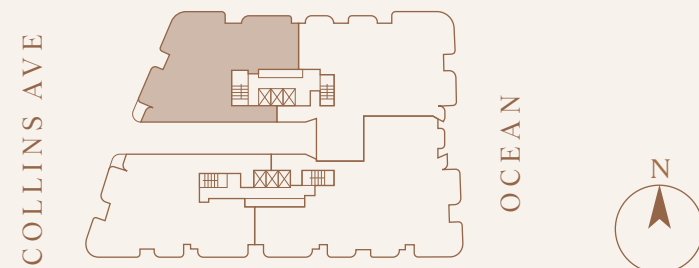
4.5 Bathroom

Total Interior
 5,087.80 FT² / 472.67 M²

Total Exterior
 948.97 FT² / 88.16 M²



ATLANTIC OCEAN





8777 Collins Ave, Surfside, FL 33154

TheDelmore.com
+1 305 902 3301
sales@thedelmore.com

Exclusive Sales & Marketing
Douglas Elliman

DAMAC

Stated dimensions are measured to the exterior boundaries of the exterior walls and the centerline of interior demising walls and in fact vary from the dimensions that would be determined by using the description and definition of the "Unit" set forth in the Declaration (which generally only includes the interior airspace between the perimeter walls and excludes interior structural components). Refer to the Declaration included in the Condominium Documents for the area of the Unit, determined in accordance with those defined unit boundaries. Note that measurements of rooms set forth on this floor plan are generally taken at the greatest points of each given room (as if the room were a perfect rectangle), without regard for any cutouts. Accordingly, the area of the actual room will typically be smaller than the product obtained by multiplying the stated length times width. All dimensions are approximate and may vary with actual construction, and all floor plans and development plans are subject to change. All depictions of appliances, counters, soffits, floor coverings, furniture and other matters of detail, including, without limitation, items of finish and decoration, are conceptual only and are not necessarily included in each Unit.

THE
DELMORE
SUNSHINE BEACH MIAMI

5 BED FLOORPLANS

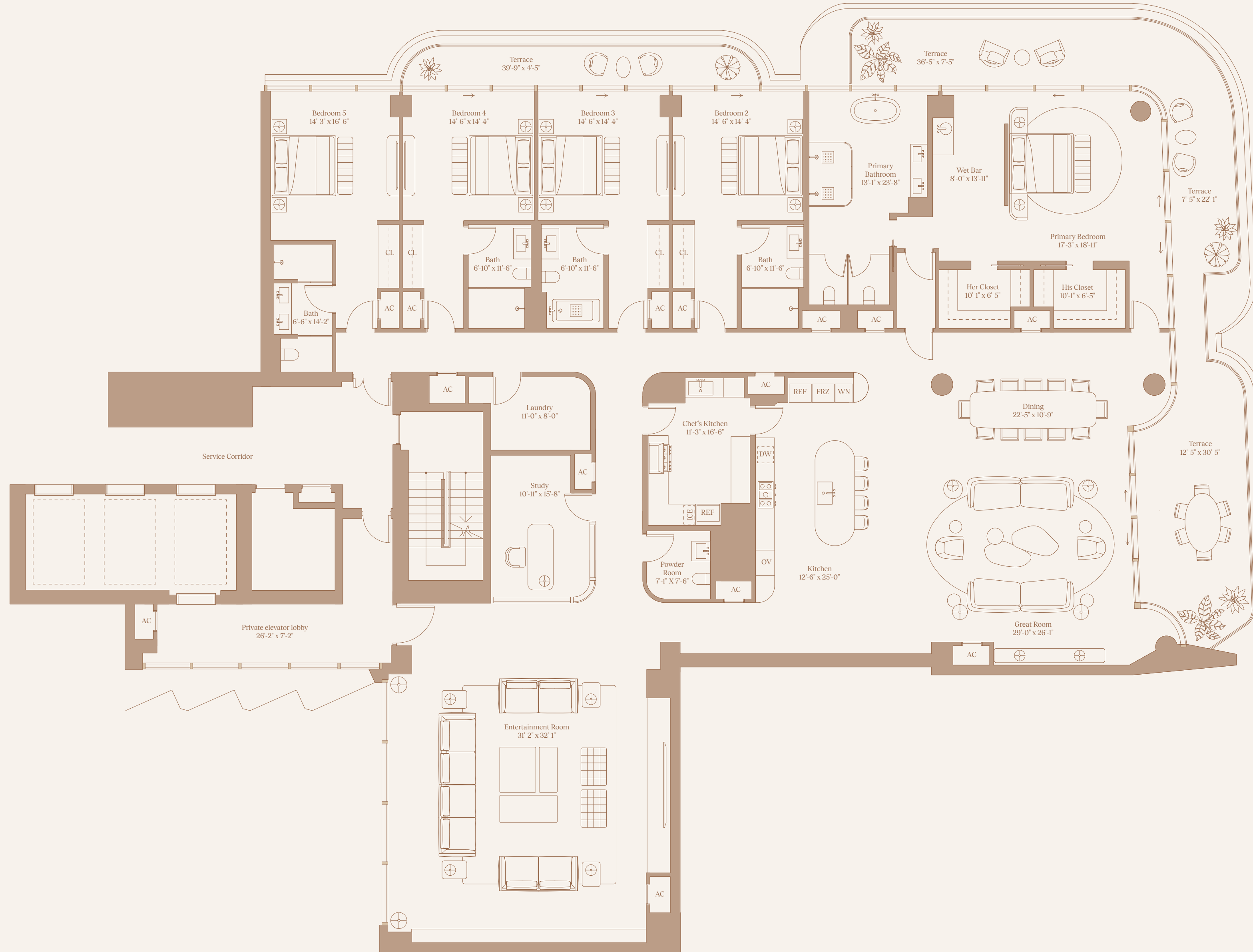
THE
DELMORE
 SURFSIDE MIAMI

RESIDENCE 901

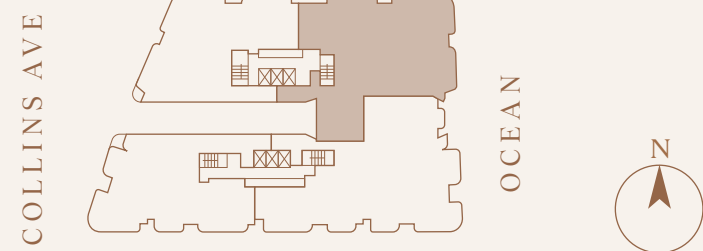
5 Bedroom
 5.5 Bathroom

Total Interior
 7,027.45 FT² / 652.87 M²

Total Exterior
 1,050.72 FT² / 97.62 M²



ATLANTIC OCEAN





8777 Collins Ave, Surfside, FL 33154

TheDelmore.com
+1 305 902 3301
sales@thedelmore.com

Exclusive Sales & Marketing
Douglas Elliman

DAMAC

Stated dimensions are measured to the exterior boundaries of the exterior walls and the centerline of interior demising walls and in fact vary from the dimensions that would be determined by using the description and definition of the "Unit" set forth in the Declaration (which generally only includes the interior airspace between the perimeter walls and excludes interior structural components). Refer to the Declaration included in the Condominium Documents for the area of the Unit, determined in accordance with those defined unit boundaries. Note that measurements of rooms set forth on this floor plan are generally taken at the greatest points of each given room (as if the room were a perfect rectangle), without regard for any cutouts. Accordingly, the area of the actual room will typically be smaller than the product obtained by multiplying the stated length times width. All dimensions are approximate and may vary with actual construction, and all floor plans and development plans are subject to change. All depictions of appliances, counters, soffits, floor coverings, furniture and other matters of detail, including, without limitation, items of finish and decoration, are conceptual only and are not necessarily included in each Unit.

THE
DELMORE
SUNSHINE BEACH MIAMI

4 BED FLOORPLANS

RESIDENCE 904

4 Bedroom

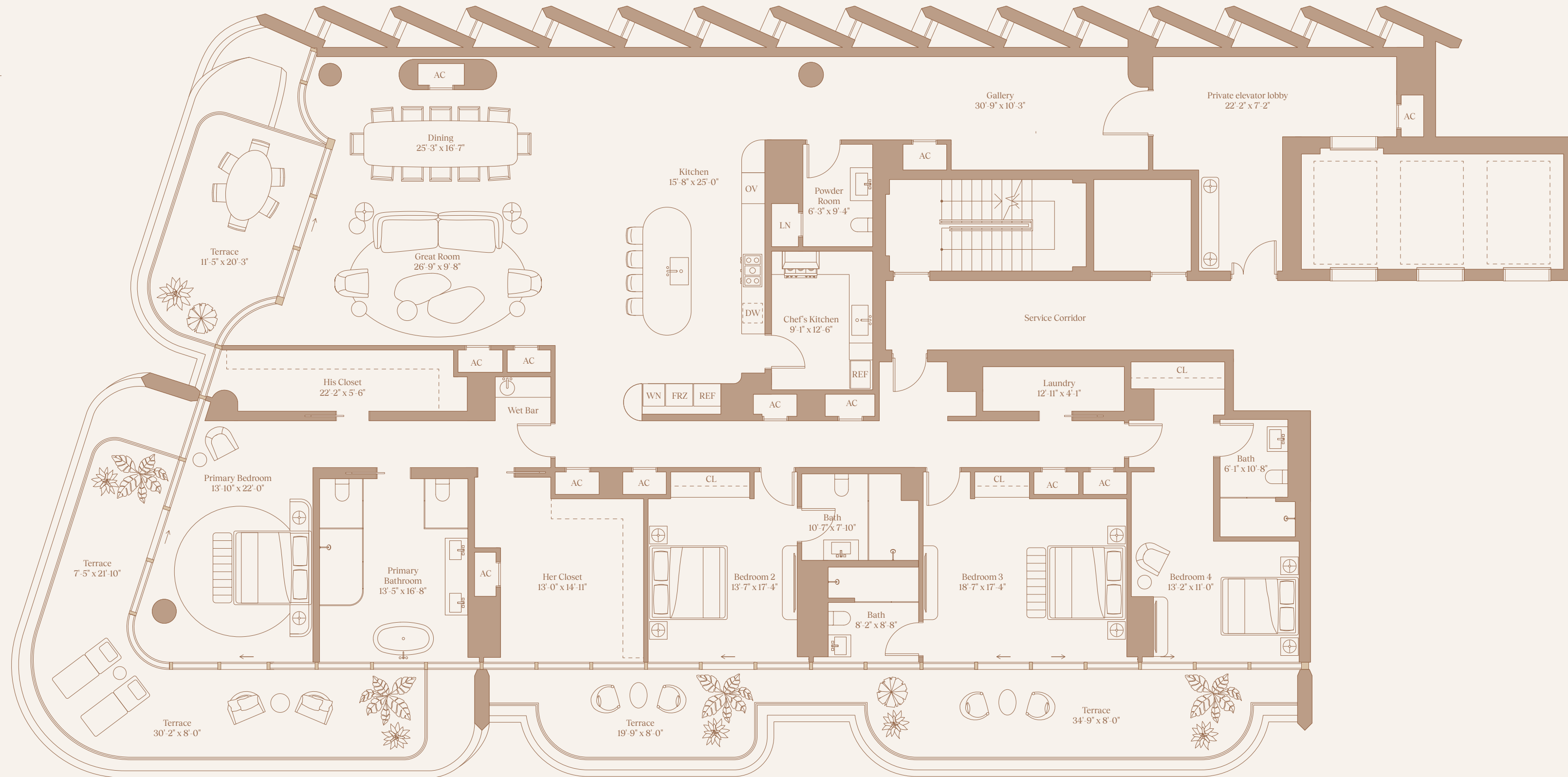
4.5 Bathroom

Total Interior

5,251.81 FT² / 487.91 M²

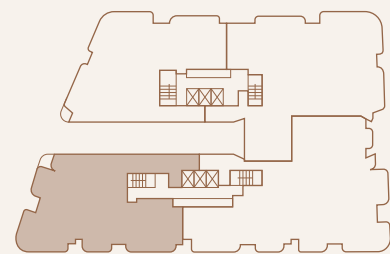
Total Exterior

1,273.62 FT² / 118.32 M²



ATLANTIC OCEAN

COLLINS AVE



OCEAN





8777 Collins Ave, Surfside, FL 33154

TheDelmore.com
+1 305 902 3301
sales@thedelmore.com

Exclusive Sales & Marketing
Douglas Elliman

DAMAC

Stated dimensions are measured to the exterior boundaries of the exterior walls and the centerline of interior demising walls and in fact vary from the dimensions that would be determined by using the description and definition of the "Unit" set forth in the Declaration (which generally only includes the interior airspace between the perimeter walls and excludes interior structural components). Refer to the Declaration included in the Condominium Documents for the area of the Unit, determined in accordance with those defined unit boundaries. Note that measurements of rooms set forth on this floor plan are generally taken at the greatest points of each given room (as if the room were a perfect rectangle), without regard for any cutouts. Accordingly, the area of the actual room will typically be smaller than the product obtained by multiplying the stated length times width. All dimensions are approximate and may vary with actual construction, and all floor plans and development plans are subject to change. All depictions of appliances, counters, soffits, floor coverings, furniture and other matters of detail, including, without limitation, items of finish and decoration, are conceptual only and are not necessarily included in each Unit.