

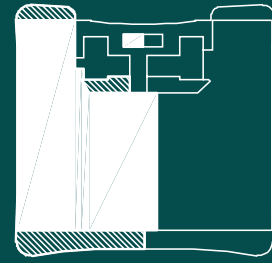


OCEAN⁵⁸⁰
OPULENCE AWAITS



UNIT 902

BRINY AVE.



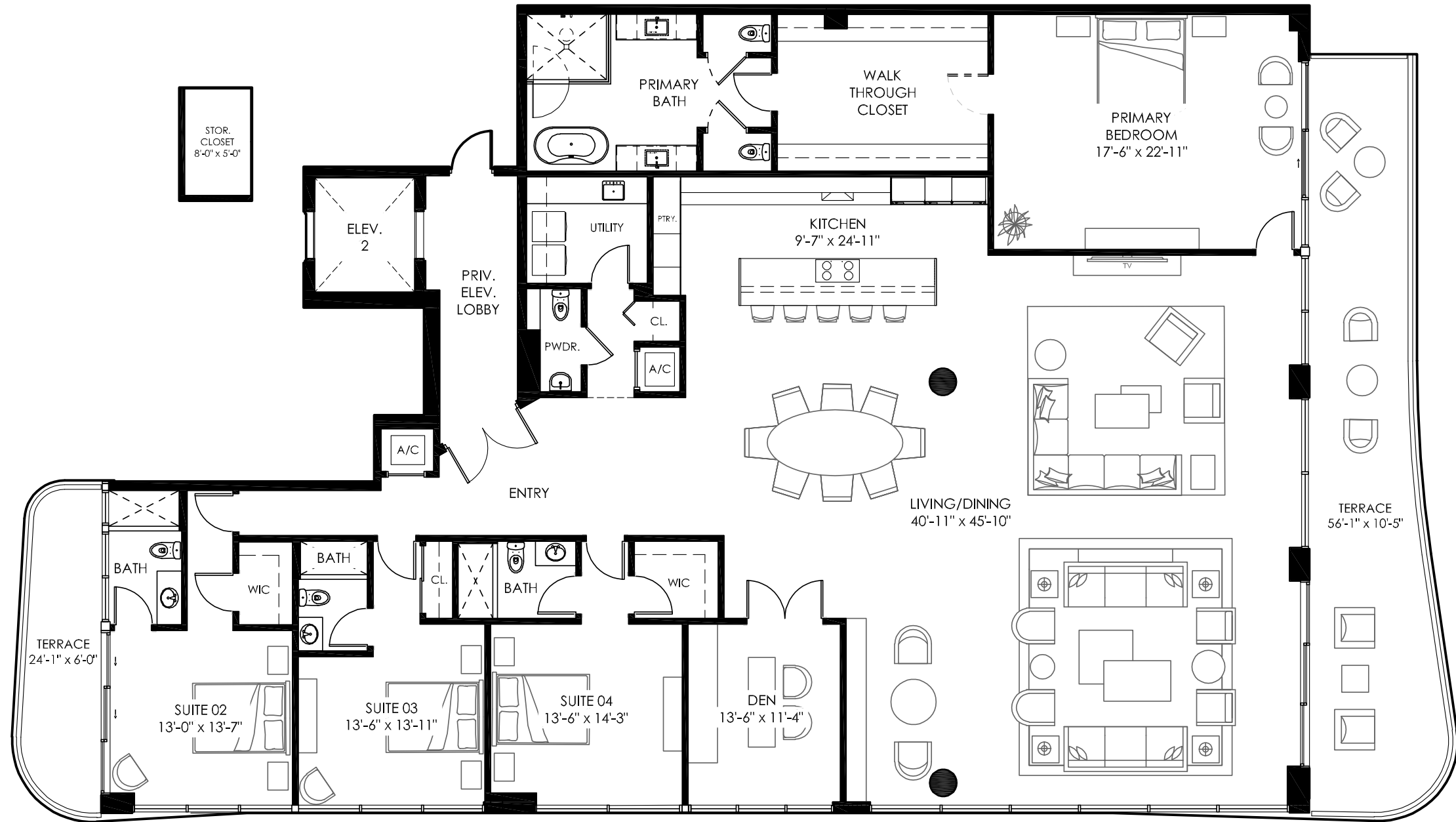
OCEAN

UNIT 902

**4 Bedroom
4 1/2 Bath
Den**

4,493 SF interior
647 SF terrace
5,140 SF total area

580
OCEAN
OPULENCE AWAITS



OCEAN⁵⁸⁰

OPULENCE AWAITS

Ocean580 Sales Gallery
101 S Ocean Blvd.
Pompano Beach, Florida 33062

Ocean580 Residences
580 Briny Avenue
Pompano Beach, Florida 33062

DEVELOPER:
SALES & MARKETING:



ORAL REPRESENTATIONS CANNOT BE RELIED UPON AS CORRECTLY STATING REPRESENTATIONS OF THE DEVELOPER. FOR CORRECT REPRESENTATIONS, MAKE REFERENCE TO THIS BROCHURE AND TO THE DOCUMENTS REQUIRED BY SECTION 718.503, FLORIDA STATUTES, TO BE FURNISHED BY A DEVELOPER TO A BUYER OR LESSEE.

SKETCHES AND ILLUSTRATIONS ARE ARTIST'S RENDERINGS. DETAILS AND FIELD VARIATIONS ARE SUBJECT TO CHANGE. ALL DIMENSIONS ARE APPROXIMATE, AND ALL FLOOR PLANS AND DEVELOPMENT PLANS ARE SUBJECT TO CHANGE.

THERE ARE VARIOUS METHODS FOR CALCULATING THE TOTAL SQUARE FOOTAGE OF A CONDOMINIUM UNIT, AND DEPENDING ON THE METHOD OF CALCULATION, THE QUOTED SQUARE FOOTAGE OF A CONDOMINIUM UNIT MAY VARY BY MORE THAN A NOMINAL AMOUNT. THE DIMENSIONS STATED IN THIS BROCHURE ARE MEASURED TO THE EXTERIOR BOUNDARIES OF THE EXTERIOR WALLS AND THE CENTERLINE OF INTERIOR DEMISING WALLS AND, IN FACT, ARE LARGER THAN THE DIMENSIONS OF THE "UNIT" AS DEFINED IN THE DECLARATION OF CONDOMINIUM FOR OCEAN 580 CONDOMINIUM, WHICH IS MEASURED USING INTERIOR MEASUREMENTS.



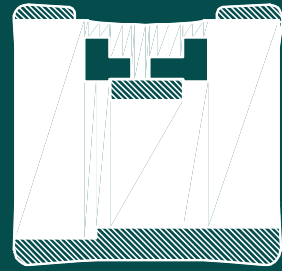


OCEAN⁵⁸⁰
OPULENCE AWAITS



PENTHOUSE 1001

BRINY AVE.



OCEAN

PENTHOUSE 1001

**5 Bedroom
6 1/2 Bath
Office**

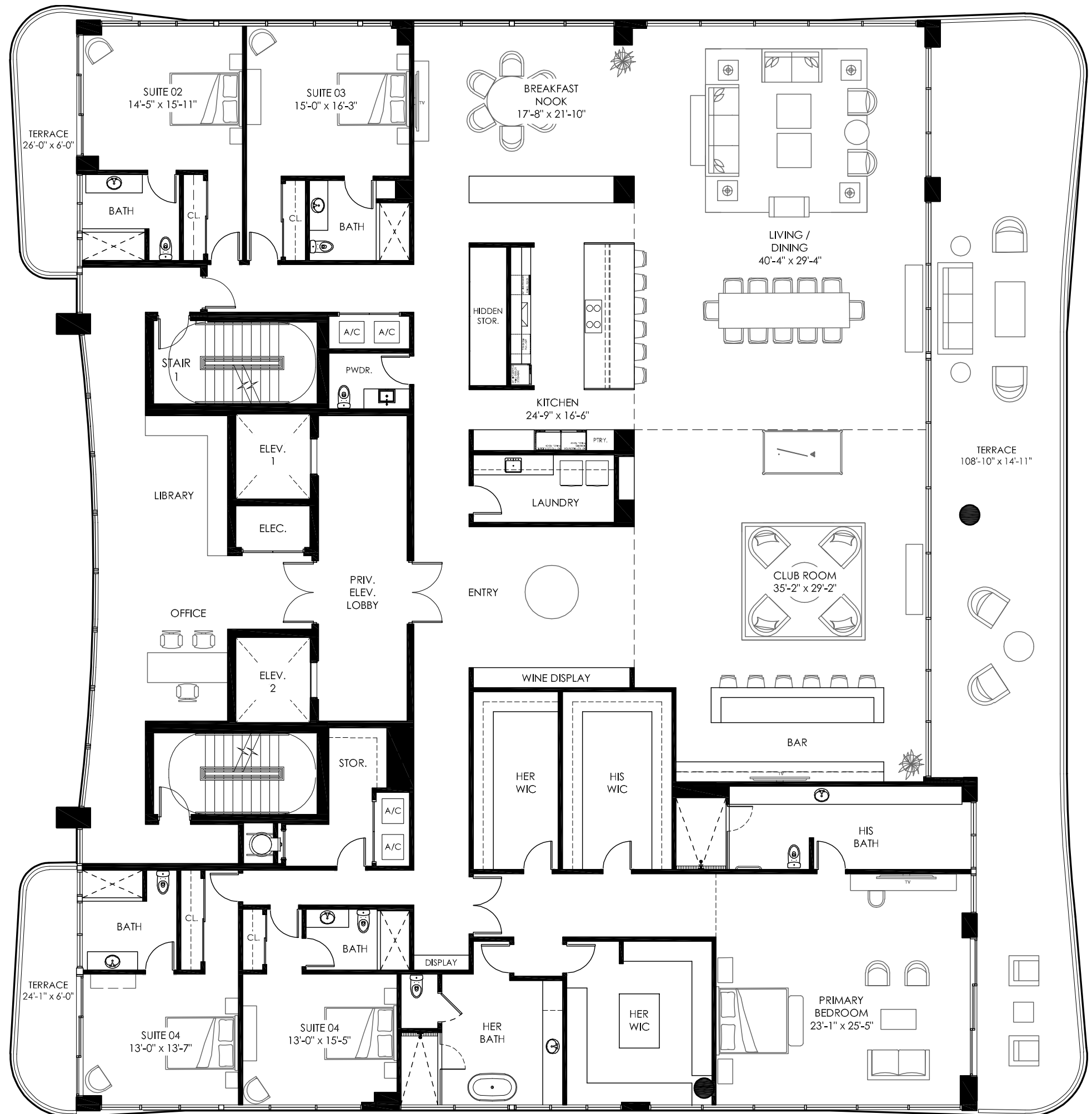
8,872 SF interior

1,707 SF terrace

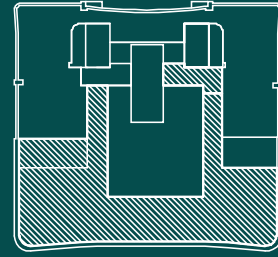
3,325 SF roof terrace
across the entire building
on the east side

13,904 SF total area

580
OCEAN
OPULENCE AWAITS



BRINY AVE.

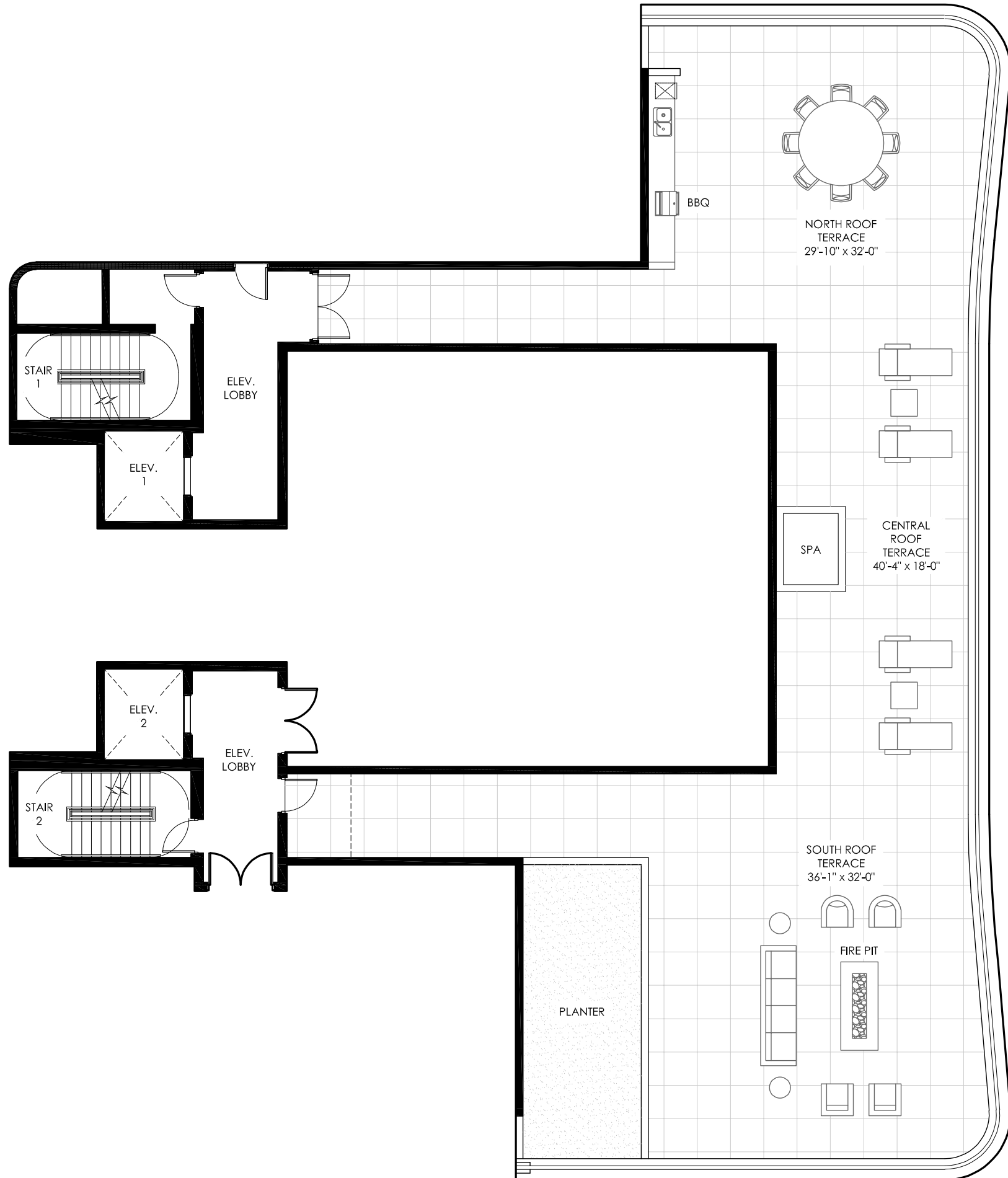


OCEAN

PENTHOUSE ROOF TERRACE

3,325 SF area
East Roof Terrace
Penthouse Only

OCEAN⁵⁸⁰
OPULENCE AWAITS



OCEAN⁵⁸⁰

OPULENCE AWAITS

Ocean580 Sales Gallery
101 S Ocean Blvd.
Pompano Beach, Florida 33062

Ocean580 Residences
580 Briny Avenue
Pompano Beach, Florida 33062

DEVELOPER:
SALES & MARKETING:



ORAL REPRESENTATIONS CANNOT BE RELIED UPON AS CORRECTLY STATING REPRESENTATIONS OF THE DEVELOPER. FOR CORRECT REPRESENTATIONS, MAKE REFERENCE TO THIS BROCHURE AND TO THE DOCUMENTS REQUIRED BY SECTION 718.503, FLORIDA STATUTES, TO BE FURNISHED BY A DEVELOPER TO A BUYER OR LESSEE.

SKETCHES AND ILLUSTRATIONS ARE ARTIST'S RENDERINGS. DETAILS AND FIELD VARIATIONS ARE SUBJECT TO CHANGE. ALL DIMENSIONS ARE APPROXIMATE, AND ALL FLOOR PLANS AND DEVELOPMENT PLANS ARE SUBJECT TO CHANGE.

THERE ARE VARIOUS METHODS FOR CALCULATING THE TOTAL SQUARE FOOTAGE OF A CONDOMINIUM UNIT, AND DEPENDING ON THE METHOD OF CALCULATION, THE QUOTED SQUARE FOOTAGE OF A CONDOMINIUM UNIT MAY VARY BY MORE THAN A NOMINAL AMOUNT. THE DIMENSIONS STATED IN THIS BROCHURE ARE MEASURED TO THE EXTERIOR BOUNDARIES OF THE EXTERIOR WALLS AND THE CENTERLINE OF INTERIOR DEMISING WALLS AND, IN FACT, ARE LARGER THAN THE DIMENSIONS OF THE "UNIT" AS DEFINED IN THE DECLARATION OF CONDOMINIUM FOR OCEAN 580 CONDOMINIUM, WHICH IS MEASURED USING INTERIOR MEASUREMENTS.





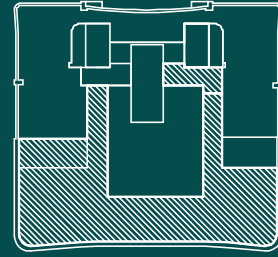
OCEAN⁵⁸⁰
OPULENCE AWAITS



PENTHOUSE ROOF TERRACE



BRINY AVE.

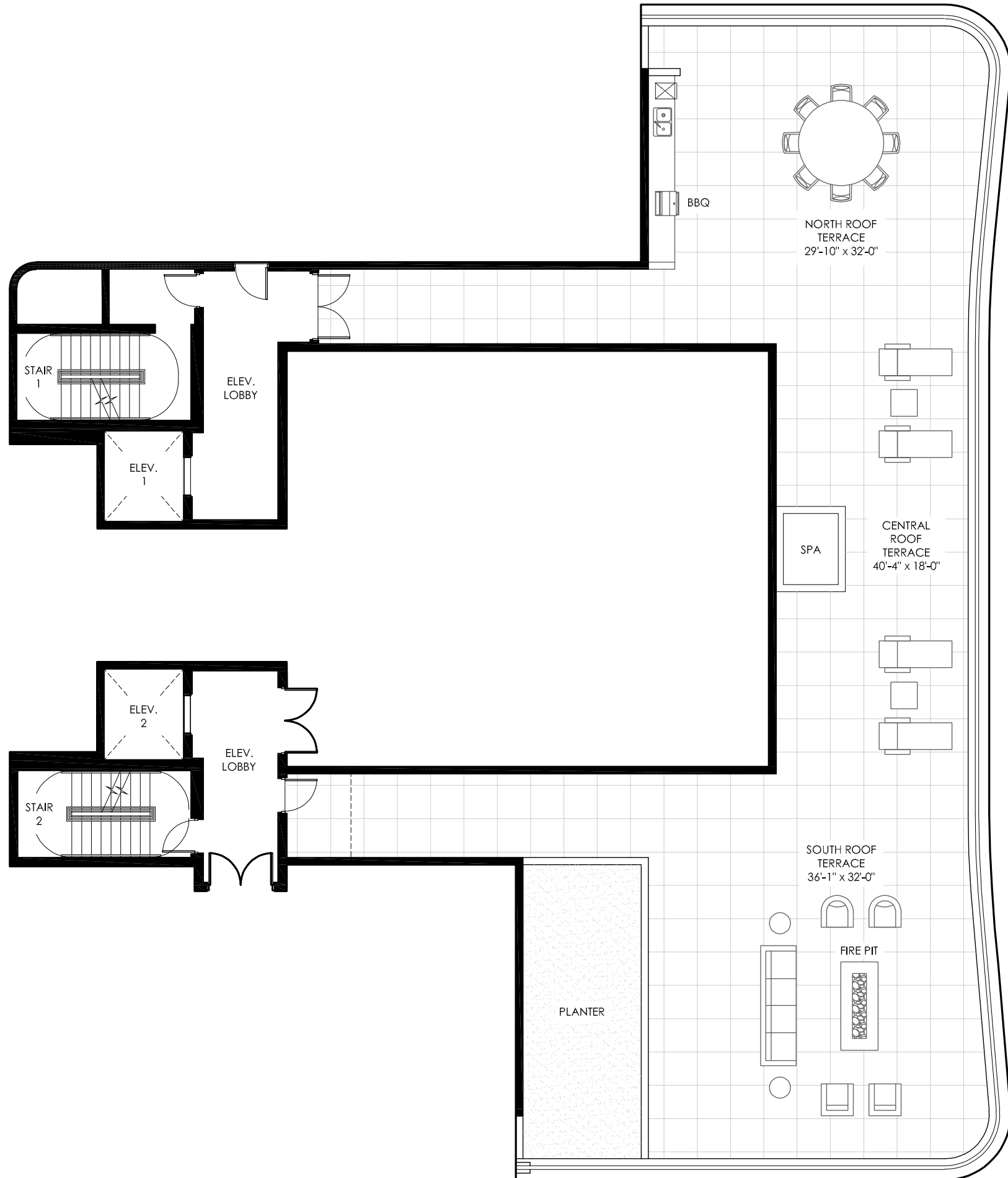


OCEAN

PENTHOUSE ROOF TERRACE

3,325 SF area
East Roof Terrace
Penthouse Only

OCEAN⁵⁸⁰
OPULENCE AWAITS



OCEAN⁵⁸⁰

OPULENCE AWAITS

Ocean580 Sales Gallery
101 S Ocean Blvd.
Pompano Beach, Florida 33062

Ocean580 Residences
580 Briny Avenue
Pompano Beach, Florida 33062

DEVELOPER:
SALES & MARKETING:



ORAL REPRESENTATIONS CANNOT BE RELIED UPON AS CORRECTLY STATING REPRESENTATIONS OF THE DEVELOPER. FOR CORRECT REPRESENTATIONS, MAKE REFERENCE TO THIS BROCHURE AND TO THE DOCUMENTS REQUIRED BY SECTION 718.503, FLORIDA STATUTES, TO BE FURNISHED BY A DEVELOPER TO A BUYER OR LESSEE.

SKETCHES AND ILLUSTRATIONS ARE ARTIST'S RENDERINGS. DETAILS AND FIELD VARIATIONS ARE SUBJECT TO CHANGE. ALL DIMENSIONS ARE APPROXIMATE, AND ALL FLOOR PLANS AND DEVELOPMENT PLANS ARE SUBJECT TO CHANGE.

THERE ARE VARIOUS METHODS FOR CALCULATING THE TOTAL SQUARE FOOTAGE OF A CONDOMINIUM UNIT, AND DEPENDING ON THE METHOD OF CALCULATION, THE QUOTED SQUARE FOOTAGE OF A CONDOMINIUM UNIT MAY VARY BY MORE THAN A NOMINAL AMOUNT. THE DIMENSIONS STATED IN THIS BROCHURE ARE MEASURED TO THE EXTERIOR BOUNDARIES OF THE EXTERIOR WALLS AND THE CENTERLINE OF INTERIOR DEMISING WALLS AND, IN FACT, ARE LARGER THAN THE DIMENSIONS OF THE "UNIT" AS DEFINED IN THE DECLARATION OF CONDOMINIUM FOR OCEAN 580 CONDOMINIUM, WHICH IS MEASURED USING INTERIOR MEASUREMENTS.





OCEAN⁵⁸⁰
OPULENCE AWAITS



UNIT 201

OCEAN⁵⁸⁰

OPULENCE AWAITS

Ocean580 Sales Gallery
101 S Ocean Blvd.
Pompano Beach, Florida 33062

Ocean580 Residences
580 Briny Avenue
Pompano Beach, Florida 33062

DEVELOPER:
SALES & MARKETING:



ORAL REPRESENTATIONS CANNOT BE RELIED UPON AS CORRECTLY STATING REPRESENTATIONS OF THE DEVELOPER. FOR CORRECT REPRESENTATIONS, MAKE REFERENCE TO THIS BROCHURE AND TO THE DOCUMENTS REQUIRED BY SECTION 718.503, FLORIDA STATUTES, TO BE FURNISHED BY A DEVELOPER TO A BUYER OR LESSEE.

SKETCHES AND ILLUSTRATIONS ARE ARTIST'S RENDERINGS. DETAILS AND FIELD VARIATIONS ARE SUBJECT TO CHANGE. ALL DIMENSIONS ARE APPROXIMATE, AND ALL FLOOR PLANS AND DEVELOPMENT PLANS ARE SUBJECT TO CHANGE.

THERE ARE VARIOUS METHODS FOR CALCULATING THE TOTAL SQUARE FOOTAGE OF A CONDOMINIUM UNIT, AND DEPENDING ON THE METHOD OF CALCULATION, THE QUOTED SQUARE FOOTAGE OF A CONDOMINIUM UNIT MAY VARY BY MORE THAN A NOMINAL AMOUNT. THE DIMENSIONS STATED IN THIS BROCHURE ARE MEASURED TO THE EXTERIOR BOUNDARIES OF THE EXTERIOR WALLS AND THE CENTERLINE OF INTERIOR DEMISING WALLS AND, IN FACT, ARE LARGER THAN THE DIMENSIONS OF THE "UNIT" AS DEFINED IN THE DECLARATION OF CONDOMINIUM FOR OCEAN 580 CONDOMINIUM, WHICH IS MEASURED USING INTERIOR MEASUREMENTS.



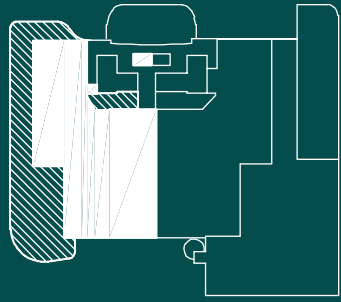


OCEAN⁵⁸⁰
OPULENCE AWAITS



UNIT 202

BRINY AVE.



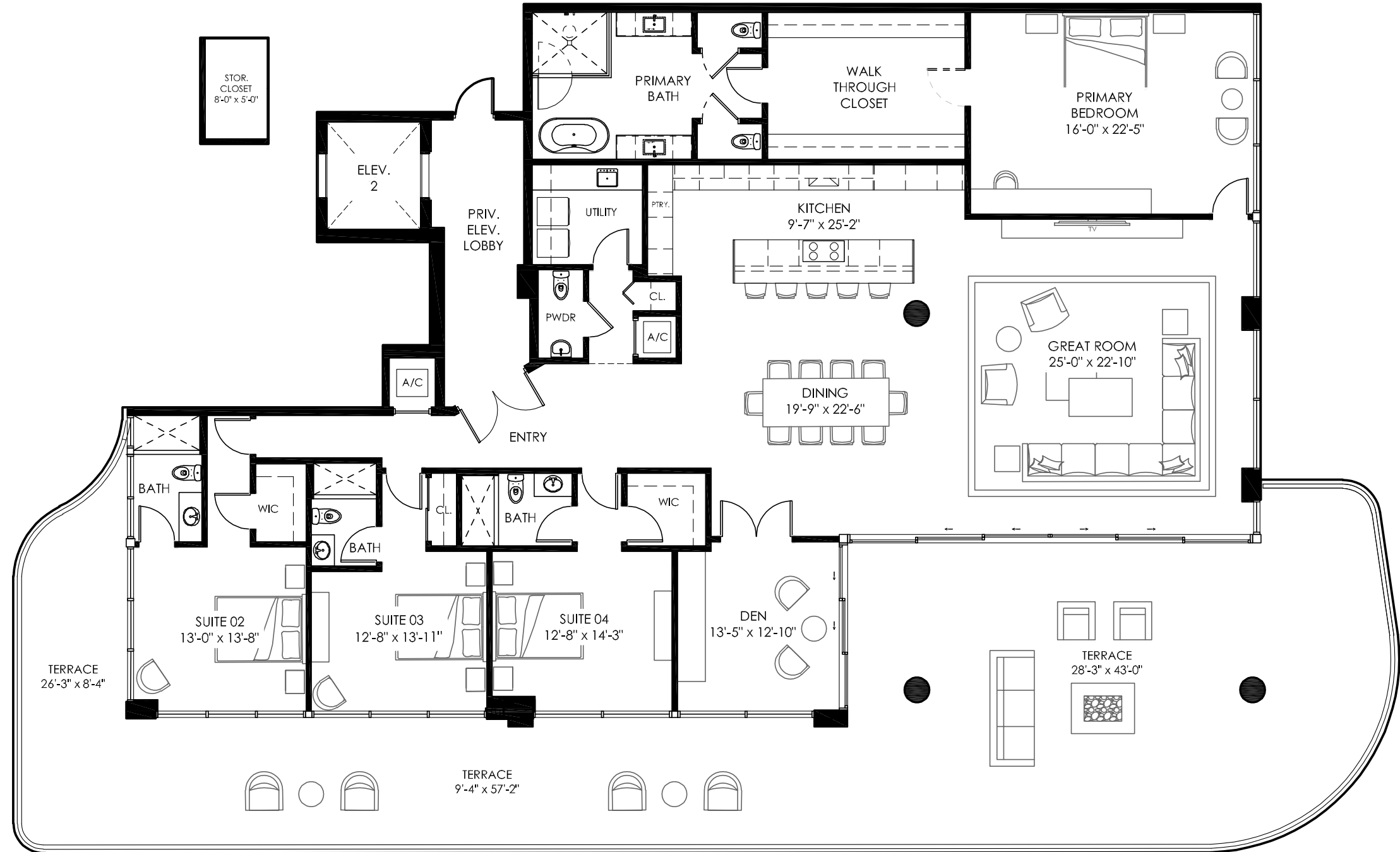
OCEAN

UNIT 202

**4 Bedroom
4 1/2 Bath
Den**

3,831 SF interior
1,925 SF terrace
5,756 SF total area

580
OCEAN
OPULENCE AWAITS



OCEAN⁵⁸⁰

OPULENCE AWAITS

Ocean580 Sales Gallery
101 S Ocean Blvd.
Pompano Beach, Florida 33062

Ocean580 Residences
580 Briny Avenue
Pompano Beach, Florida 33062

DEVELOPER:
SALES & MARKETING:



ORAL REPRESENTATIONS CANNOT BE RELIED UPON AS CORRECTLY STATING REPRESENTATIONS OF THE DEVELOPER. FOR CORRECT REPRESENTATIONS, MAKE REFERENCE TO THIS BROCHURE AND TO THE DOCUMENTS REQUIRED BY SECTION 718.503, FLORIDA STATUTES, TO BE FURNISHED BY A DEVELOPER TO A BUYER OR LESSEE.

SKETCHES AND ILLUSTRATIONS ARE ARTIST'S RENDERINGS. DETAILS AND FIELD VARIATIONS ARE SUBJECT TO CHANGE. ALL DIMENSIONS ARE APPROXIMATE, AND ALL FLOOR PLANS AND DEVELOPMENT PLANS ARE SUBJECT TO CHANGE.

THERE ARE VARIOUS METHODS FOR CALCULATING THE TOTAL SQUARE FOOTAGE OF A CONDOMINIUM UNIT, AND DEPENDING ON THE METHOD OF CALCULATION, THE QUOTED SQUARE FOOTAGE OF A CONDOMINIUM UNIT MAY VARY BY MORE THAN A NOMINAL AMOUNT. THE DIMENSIONS STATED IN THIS BROCHURE ARE MEASURED TO THE EXTERIOR BOUNDARIES OF THE EXTERIOR WALLS AND THE CENTERLINE OF INTERIOR DEMISING WALLS AND, IN FACT, ARE LARGER THAN THE DIMENSIONS OF THE "UNIT" AS DEFINED IN THE DECLARATION OF CONDOMINIUM FOR OCEAN 580 CONDOMINIUM, WHICH IS MEASURED USING INTERIOR MEASUREMENTS.





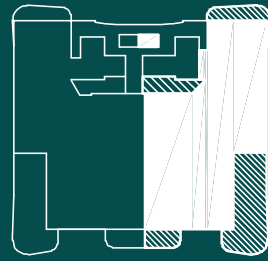
OCEAN⁵⁸⁰
OPULENCE AWAITS



UNIT 301 TO 801



BRINY AVE.



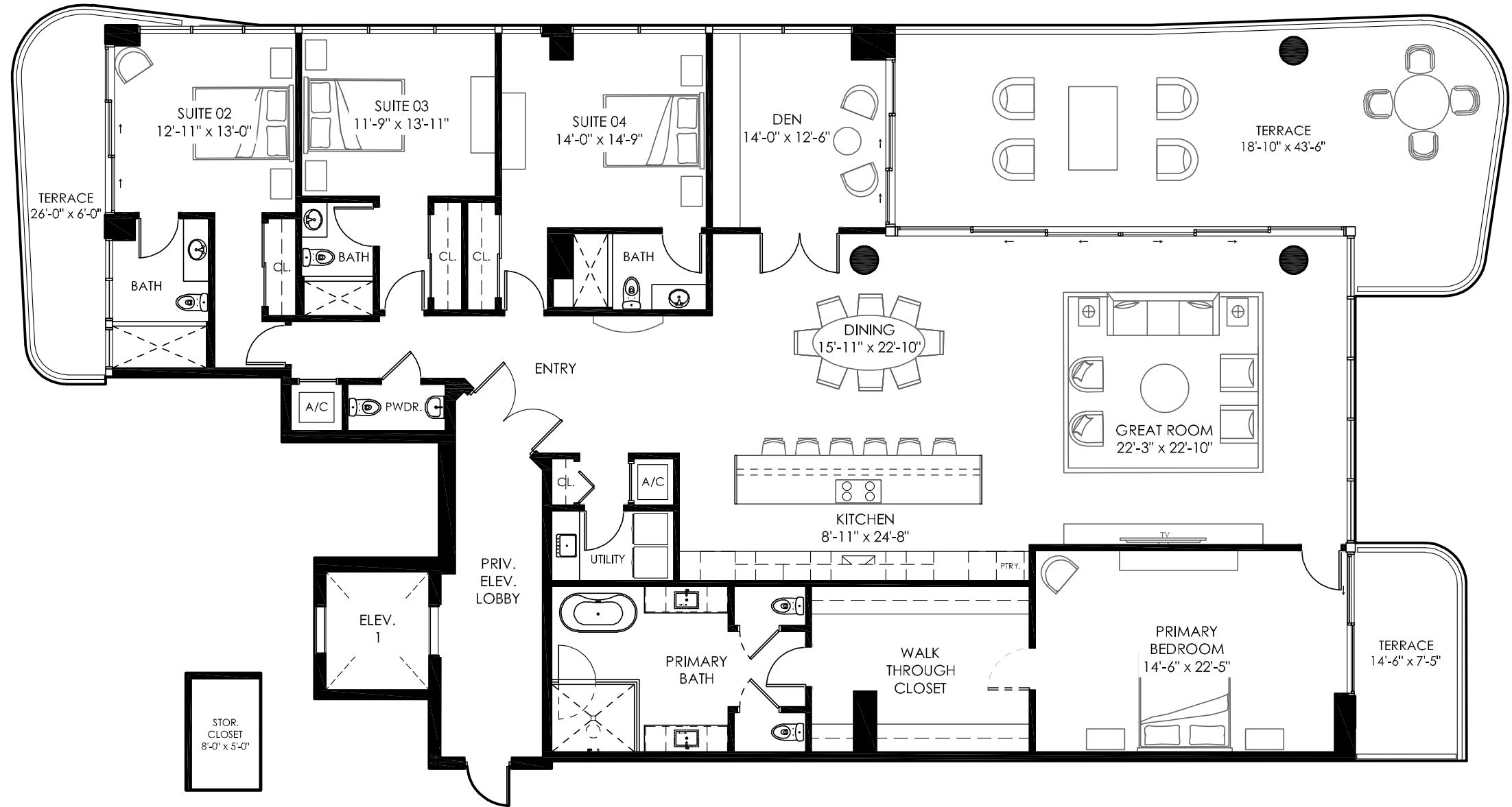
OCEAN

UNIT
301
to
801

4 Bedroom
4 1/2 Bath
Den

3,688 SF interior
966 SF terrace
4,654 SF total area

580
OCEAN
OPULENCE AWAITS



OCEAN⁵⁸⁰

OPULENCE AWAITS

Ocean580 Sales Gallery
101 S Ocean Blvd.
Pompano Beach, Florida 33062

Ocean580 Residences
580 Briny Avenue
Pompano Beach, Florida 33062

DEVELOPER:
SALES & MARKETING:



ORAL REPRESENTATIONS CANNOT BE RELIED UPON AS CORRECTLY STATING REPRESENTATIONS OF THE DEVELOPER. FOR CORRECT REPRESENTATIONS, MAKE REFERENCE TO THIS BROCHURE AND TO THE DOCUMENTS REQUIRED BY SECTION 718.503, FLORIDA STATUTES, TO BE FURNISHED BY A DEVELOPER TO A BUYER OR LESSEE.

SKETCHES AND ILLUSTRATIONS ARE ARTIST'S RENDERINGS. DETAILS AND FIELD VARIATIONS ARE SUBJECT TO CHANGE. ALL DIMENSIONS ARE APPROXIMATE, AND ALL FLOOR PLANS AND DEVELOPMENT PLANS ARE SUBJECT TO CHANGE.

THERE ARE VARIOUS METHODS FOR CALCULATING THE TOTAL SQUARE FOOTAGE OF A CONDOMINIUM UNIT, AND DEPENDING ON THE METHOD OF CALCULATION, THE QUOTED SQUARE FOOTAGE OF A CONDOMINIUM UNIT MAY VARY BY MORE THAN A NOMINAL AMOUNT. THE DIMENSIONS STATED IN THIS BROCHURE ARE MEASURED TO THE EXTERIOR BOUNDARIES OF THE EXTERIOR WALLS AND THE CENTERLINE OF INTERIOR DEMISING WALLS AND, IN FACT, ARE LARGER THAN THE DIMENSIONS OF THE "UNIT" AS DEFINED IN THE DECLARATION OF CONDOMINIUM FOR OCEAN 580 CONDOMINIUM, WHICH IS MEASURED USING INTERIOR MEASUREMENTS.





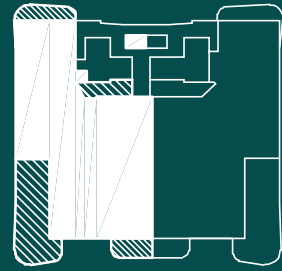
OCEAN⁵⁸⁰
OPULENCE AWAITS



UNIT 302 TO 802



BRINY AVE.



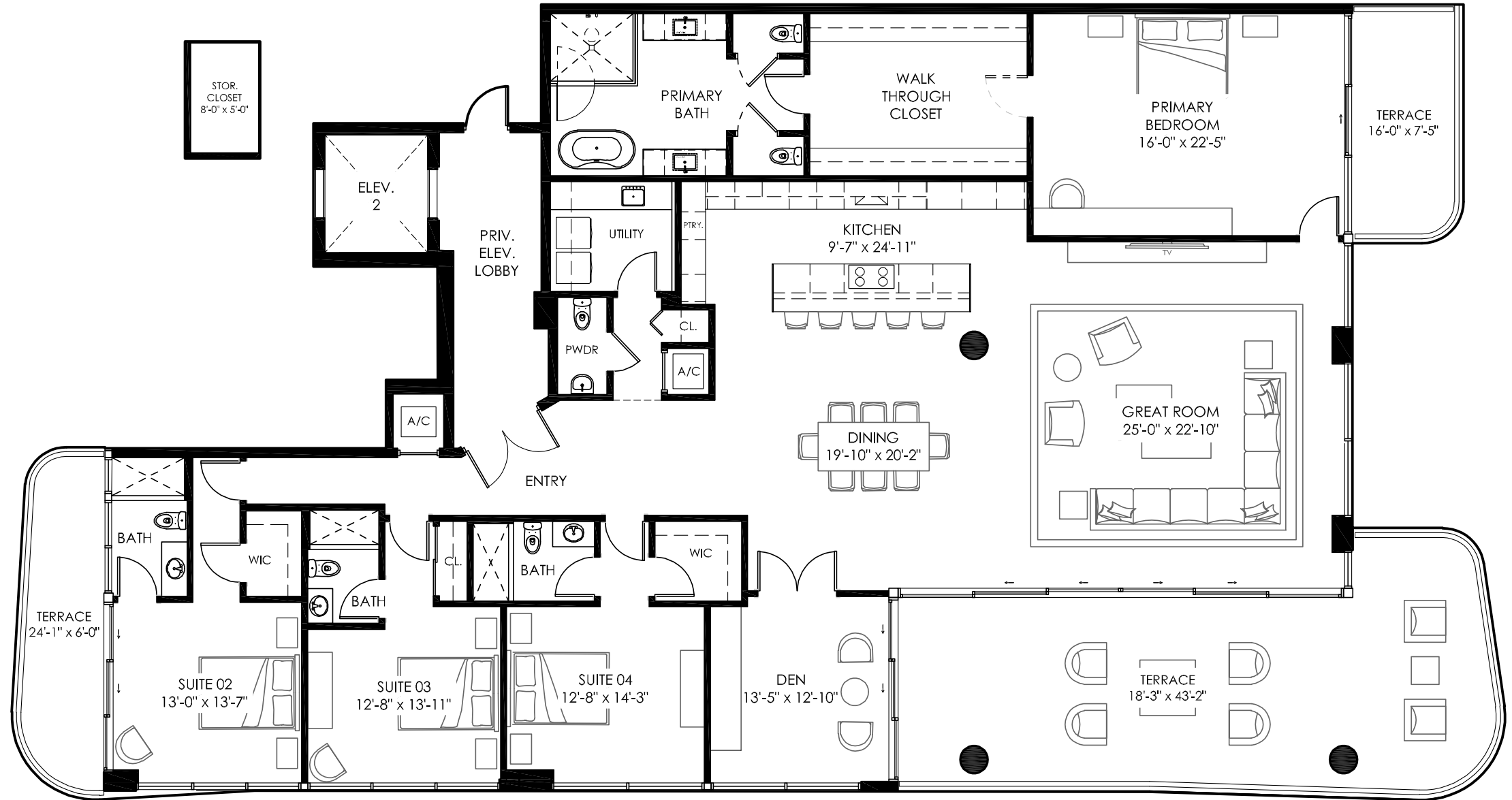
OCEAN

UNIT 302 to 802

**4 Bedroom
4 1/2 Bath
Den**

3,831 SF interior
934 SF terrace
4,765 SF total area

OCEAN⁵⁸⁰
OPULENCE AWAITS



OCEAN⁵⁸⁰

OPULENCE AWAITS

Ocean580 Sales Gallery
101 S Ocean Blvd.
Pompano Beach, Florida 33062

Ocean580 Residences
580 Briny Avenue
Pompano Beach, Florida 33062

DEVELOPER:
SALES & MARKETING:



ORAL REPRESENTATIONS CANNOT BE RELIED UPON AS CORRECTLY STATING REPRESENTATIONS OF THE DEVELOPER. FOR CORRECT REPRESENTATIONS, MAKE REFERENCE TO THIS BROCHURE AND TO THE DOCUMENTS REQUIRED BY SECTION 718.503, FLORIDA STATUTES, TO BE FURNISHED BY A DEVELOPER TO A BUYER OR LESSEE.

SKETCHES AND ILLUSTRATIONS ARE ARTIST'S RENDERINGS. DETAILS AND FIELD VARIATIONS ARE SUBJECT TO CHANGE. ALL DIMENSIONS ARE APPROXIMATE, AND ALL FLOOR PLANS AND DEVELOPMENT PLANS ARE SUBJECT TO CHANGE.

THERE ARE VARIOUS METHODS FOR CALCULATING THE TOTAL SQUARE FOOTAGE OF A CONDOMINIUM UNIT, AND DEPENDING ON THE METHOD OF CALCULATION, THE QUOTED SQUARE FOOTAGE OF A CONDOMINIUM UNIT MAY VARY BY MORE THAN A NOMINAL AMOUNT. THE DIMENSIONS STATED IN THIS BROCHURE ARE MEASURED TO THE EXTERIOR BOUNDARIES OF THE EXTERIOR WALLS AND THE CENTERLINE OF INTERIOR DEMISING WALLS AND, IN FACT, ARE LARGER THAN THE DIMENSIONS OF THE "UNIT" AS DEFINED IN THE DECLARATION OF CONDOMINIUM FOR OCEAN 580 CONDOMINIUM, WHICH IS MEASURED USING INTERIOR MEASUREMENTS.



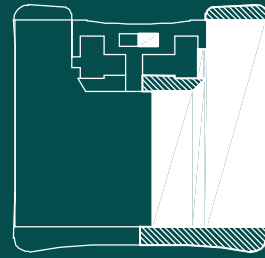


OCEAN⁵⁸⁰
OPULENCE AWAITS



UNIT 901

BRINY AVE.

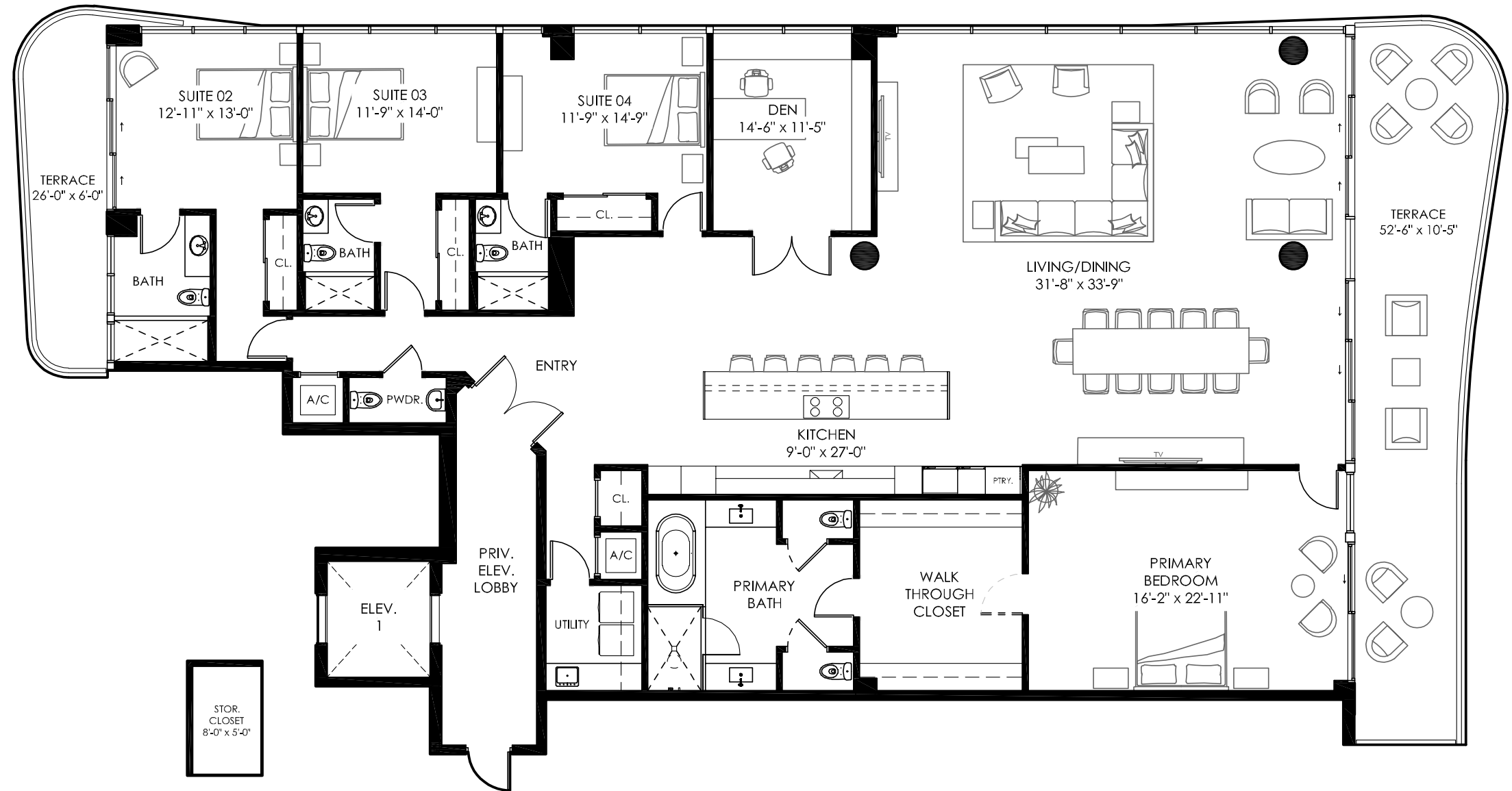


OCEAN

UNIT
901

**4 Bedroom
4 1/2 Bath
Den**

3,965 SF interior
632 SF terrace
4,597 SF total area



OCEAN⁵⁸⁰
OPULENCE AWAITS

OCEAN⁵⁸⁰

OPULENCE AWAITS

Ocean580 Sales Gallery
101 S Ocean Blvd.
Pompano Beach, Florida 33062

Ocean580 Residences
580 Briny Avenue
Pompano Beach, Florida 33062

DEVELOPER:
SALES & MARKETING:



ORAL REPRESENTATIONS CANNOT BE RELIED UPON AS CORRECTLY STATING REPRESENTATIONS OF THE DEVELOPER. FOR CORRECT REPRESENTATIONS, MAKE REFERENCE TO THIS BROCHURE AND TO THE DOCUMENTS REQUIRED BY SECTION 718.503, FLORIDA STATUTES, TO BE FURNISHED BY A DEVELOPER TO A BUYER OR LESSEE.

SKETCHES AND ILLUSTRATIONS ARE ARTIST'S RENDERINGS. DETAILS AND FIELD VARIATIONS ARE SUBJECT TO CHANGE. ALL DIMENSIONS ARE APPROXIMATE, AND ALL FLOOR PLANS AND DEVELOPMENT PLANS ARE SUBJECT TO CHANGE.

THERE ARE VARIOUS METHODS FOR CALCULATING THE TOTAL SQUARE FOOTAGE OF A CONDOMINIUM UNIT, AND DEPENDING ON THE METHOD OF CALCULATION, THE QUOTED SQUARE FOOTAGE OF A CONDOMINIUM UNIT MAY VARY BY MORE THAN A NOMINAL AMOUNT. THE DIMENSIONS STATED IN THIS BROCHURE ARE MEASURED TO THE EXTERIOR BOUNDARIES OF THE EXTERIOR WALLS AND THE CENTERLINE OF INTERIOR DEMISING WALLS AND, IN FACT, ARE LARGER THAN THE DIMENSIONS OF THE "UNIT" AS DEFINED IN THE DECLARATION OF CONDOMINIUM FOR OCEAN 580 CONDOMINIUM, WHICH IS MEASURED USING INTERIOR MEASUREMENTS.

